



**AMERICAN AUCTIONEERS**  
— GROUP —

1146 N Central Avenue #535  
Glendale, California 91202

Phone:

818-763-2021

WWW.AAGAUCATION.COM

# PUBLIC AUCTION

**AUCTION DATE:**  
**TUESDAY JUNE 30, 2026**  
**STARTING @ 10:30 AM. (PST)**

**AUCTION LOCATION:**  
**9924 E. JACKSON AVE. SPOKANE VALLEY, WA 99206**

## “PRECISION “HARDINGE” TOOL & DIE CNC MACHINING FACILITY

**16 TOTAL**



Inspection : Monday June 29th from 9:00am to 3:00pm.

“Live Webcast Online Only – No Onsite Bidding”.

“Bidding thru Bidspotter.com”.

PRESORTED  
Standard Mail  
U.S. Postage  
**PAID**  
STA CLARITA, CA  
Permit No. 298

## DANIELSON TOOL & DIE (OWNER RETIRING)

**PRECISION**



2006 Agie “Agiecut Progress 2” CNC Wire EDM Machine s/n 297 w/ AGIEVision Controls, Travels X=500mm, Y=350mm, Z=426mm, Work Piece Dimensions X=1050mm, Y=650mm, X=426mm, 0.15mm to 0.33mm Wire Diameter Cap, Coolant System.

**MUST SEE**



Extrude Hone Profile Series Abrasive Finishing Deburring and Polishing System



2007 Haas SL-20 CNC Turning Center s/n 3076924 w/ Haas Controls, Tool resetter, 10-Station Turret, Haas VOP-A, 20Hp Vector Dual Drive, Chip Auger, 8” 3-Jaw Power Chuck, Coolant

# HARDINGE TOOL ROOM LATHES



(9) Hardinge DV-59 Narrow Bed Second OP Lathes w/ 230-3500 RPM, Tailstock, Compound Cross Slide, 5C Collet Closer.



Hardinge HLV-H Wide Bed Tool Room Lathe w/ 125-3400 RPM, Tailstock, Power Feeds, Cross Slide, 5C Collet Closer, Coolant



(6) Hardinge DV-59 / DSM-59 Narrow Bed Second OP Lathes w/ 230-3500 RPM, Tailstock, Compound Cross Slide, 5C Collet Closer.



Cyclematic CTL-27 EVS Second OP Lathe w/ 0-4000 Dial RPM, Digital Speed Readout, Tailstock, Compound Cross Slide, 5C Collet Closer, Coolant. (4) Feeler FTL-27 Narrow Bed Second OP Lathes w/ 230-3500 RPM, Tailstock, Compound Cross Slide, 5C Collet Closer.



2007 Haas SL-20 CNC Turning Center s/n 3076924 w/ Haas Controls, Tool resetter, 10-Station Turret, Haas VOP-A, 20Hp Vector Dual Drive, Chip Auger, 8" 3-Jaw Power Chuck, Coolant



(2) Hardinge HSL Speed Lathes w/ 3-Speeds, 5C Collet Closer.

# SUNNEN HONING & MACHINING DEPARTMENT

**MUST SEE**



Sunnen MBC-1804 Precision Honing Machine s/n 89288 w/ Power Stroke, Coolant.



Sunnen MBB-1660 Precision Honing Machine s/n 89192 w/ Coolant.

**EDM's :**

Cincinnati mdl. DE Electrojet Little Scotsman Die Sinker EDM Machine w/ Cincinnati Cintrojet 142 ML Power Source, Rotobore RBH-1C Power Rotary Tooling Head, Coolant System.

(2) Cincinnati mdl. DE Electrojet Little Scotsman Die Sinker EDM Machine w/ Cincinnati Cintrojet 142 Power Source, Rotobore RBH-1C Power Rotary Tooling Head, Coolant system.

Cincinnati mdl. DE Electrojet Little Scotsman Die Sinker EDM Machine w/ Cincinnati Cintrojet 142 Power Source, Coolant System.

MI Morgan Industries "Elcut" Die Sinker EDM Machine w/ Cooling System.

**Grinders :**

Extrude Hone Profile Series Abrasive Finishing Deburring and Polishing System w/ 1300 Max PSI Media Pressure. Sunnen MBC-1804 Precision Honing Machine s/n 89288 w/ Power Stroke, Coolant.

Sunnen MBB-1660 Precision Honing Machine s/n 89192 w/ Coolant.

Sunnen Precision Honing Machines.

Boyar Schultz 2A618 6" x 18" Automatic Surface Grinder w/ 6" x 12" Electromagnetic Chuck.

1 of 2 Kent KGS618 6" x 18" Surface Grinders w/ 2" x 12" Fine-Line Magnetic Chucks.

(2) Harig Super-618 6" x 18" Surface Grinders w/ 6" x 12" Fine-Line Magnetic Chuck.

Jet RT618-1A 6" x 18" Automatic Surface Grinder w/ 6" x 12" Fine-Line Magnetic Chuck, Coolant.

Boyar Schultz Six-Twelve Deluxe 6" x 12" Surface Grinder w/ Fine-Line Magnetic Chuck.

Boyar Schultz 6" x 12" Surface Grinder w/ Centerless Grinding Attachment.

Brown & Sharpe Tool and Cutter Grinder w/ Motorized Work Head, Tailstock, Coolant.

Gorton Single-Lip Tool Grinder w/ Collets.

**Support :**

1 of 4 Cress C1228TCE 25 Amp Electric Furnace.

(2) Cress C1228/942 25 Amp Electric Furnace.

Dake mdl. 5-130 130 Ton Electric/Hydraulic H-Frame Press s/n 156973.

Nugier H80-14APBD 80 Ton Hydraulic H-Frame Press.

Carolina C3P-1200 50 Ton Hydraulic H-Frame Press.

Champion Vertical Air Compressor

**Tooling :**

Hardinge Cross Slides, Tailstocks and Machine Parts. 5C Collets.

(4) 17-Drawer and (1) 14-Drawer Tooling Cabinets.

Tool Boxes and Hand Tools. Large Selection of Cutting Tools

**Inspection :**

(2) Ex-Cell-O mdl. 14-5 14" Optical Comparators w/ Surface and Profile Illumination.

(3) Kodak mdl. 2A 14" Optical Comparators w/ Profile Illumination.

Sato mdl. 3R Rockwell Hardness Tester.

Phase II Rockwell Hardness Tester.

(2) Sunnen PG-710-E Honing Gages w/ Finger Sets.

Sunnen PG-810-E Honing Gage w/ Setting Fixture.

Concentric Gages.

Micrometers.

6" Dial Calipers.

Indicator Stands.

**1 of 2**



1 of 2 Kent KGS618 6" x 18" Surface Grinders w/ 2" x 12" Fine-Line Magnetic Chucks.



Goodway GW-1440 14" x 40" Geared Head - Gap Bed Lathe w/ 55-1800 RPM, Inch/mm Threading, Tailstock, Steady and Follow Rests, KDK Tool Post, Trava-Dial, 5C Collet Closer.

**MUST SEE**



Sunnen Precision Honing Machines.

**TOOLING**

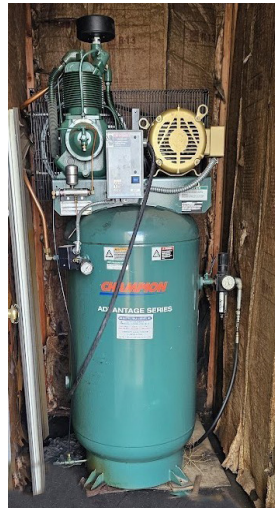


(4) 17-Drawer and (1) 14-Drawer Tooling Cabinets.

# PUBLIC AUCTION



Dake mdl. 5-130 130 Ton Electric/Hydraulic H-Frame Press s/n 156973.



Champion Vertical Air Compressor



Cress C1228/942 25 Amp Electric Furnace.



FOR FREE  
AUCTION EVALUATION  
AND PLANNING  
PLEASE CONTACT :  
AAG AT: 818 763-2021  
WWW.AGAUCTION.COM



Precision Tooling

	<p>BID ON BIDSPOTTER.COM</p>	<p><small>TERMS OF SALE: CASH OR CASHIERS CHECK ONLY. 14% BUYERS PREMIUM ON ALL PURCHASES. \$200.00 REFUNDABLE CASH DEPOSIT. 20% CASH DEPOSIT TOWARDS ALL PURCHASES. ALL SALES ARE SUBJECT TO WASHINGTON ST. SALES TAX. THERE WILL BE NO EXCEPTIONS.</small></p>	<p><b>BID LIVE OR VIA WEBCAST</b></p>	<p><small>TERMS AND CONDITIONS ALL ITEMS ARE SOLD AS-IS / WHERE - IS NO GUARANTEES, OR WARRANTIES ARE APPLIED ALL ITEMS MUST BE PICKED UP BY SPECIFIED DATE</small></p>	
--	------------------------------	--	---------------------------------------	---	--

## PARTIAL & ABBREVIATED TERMS AND CONDITIONS OF AUCTION

ALL TERMS AND CONDITIONS BEHIND THE BIDDERS CARD SUPPLIED WILL APPLY TO ALL AUCTION SALE ITEMS AND FOR ALL PRIVATE NEGOTIATIONS. BY PARTICIPATING AND BIDDING AT AUCTION YOU ARE LEGALLY BINDING A CONTRACT WITH THE AUCTION COMPANY.

ALL INVOICES MUST BE PAID WITHIN 24 HOURS FROM AUCTION DATE. IT IS PROHIBITED TO BID ON ANY ITEM THAT CANNOT BE PAID IN FULL WITHIN 24 HOURS FROM AUCTION DATE. PAYMENTS MUST BE CASHIERS CHECK, WIRE TRANSFER, OR LETTER OF GUARANTEE FROM BANK.  
ALL ITEMS MUST BE REMOVED BY JULY 8, 2026 3:00 PM (PST)  
NO LOADING OR PICK UP ON SATURDAY AND SUNDAY.  
NO LOADING BY AUCTIONEER OR SELLER.

BUYERS PREMIUM 18% FOR ALL ONLINE BIDDING ON BIDSPOTTER.COM. AUCTIONEER IS NOT RESPONSIBLE FOR MIS IDENTIFICATION OF ANY EQUIPMENT OR ASSETS BEING SOLD AT AUCTION EITHER BY VERBAL OR WRITTEN. IT IS THE BUYER'S RESPONSIBILITY TO INSPECT THE GOODS AND ASCERTAIN IF THE SPECIFICATIONS, DESCRIPTIONS AND CONDITION OF THE GOODS CONFORM TO THE BUYER'S REQUIREMENT INCLUDING SERIAL NUMBERS.

BUYER ACKNOWLEDGES THAT THE EQUIPMENT OR ITEMS PURCHASED ONCE MAY HAVE CONTAINED, EXPOSED TO, AND OR UTILIZED HAZARDOUS MATERIAL. THERE MAY BE SURFACES ON ITEMS WHERE DECONTAMINATION CANNOT BE VALIDATED: AS SUCH, THE BUYER OR BIDDER ACKNOWLEDGING THAT THEY ARE ACCEPTING THIS EQUIPMENT OR ITEMS IN AN "AS IS" CONDITION.

BUYER AND THEIR ASSOCIATES WILL HOLD AUCTIONEER AND "THE SELLER" HARMLESS AGAINST ANY AND ALL CLAIMS AND ACTIONS ARISING OUT OF THE PARTICIPATION OF THE INDEMNITEE IN THE ACTIVITY, INCLUDING, WITHOUT LIMITATION, EXPENSES, JUDGEMENTS, FINES, SETTLEMENTS AND OTHER AMOUNTS INCURRED IN CONNECTION WITH ANY LIABILITY, SUIT, ACTION, LOSS, OR DAMAGE ARISING OR RESULTING FROM THE INDEMNITEE'S PARTICIPATION IN THE AUCTION. ALL BIDDERS MUST ONLY USE APPROVED MACHINERY MOVERS BY SELLER WITH LIABILITY INSURANCE OF \$2,000,000 OR HIGHER. NO ITEMS SHALL BE REMOVED UNLESS PAID IN FULL AND ALL ITEMS SHALL BE REMOVED IN THE TIME ALLOCATED BY THE AUCTIONEER.

ALL SALES ARE FINAL, AND ALL ITEMS ARE SOLD AS IS WHERE IS, WITH ALL FAULTS AND DEFECTS.

THERE ARE NO GUARANTEE OR WARRANTY TO ANY ITEMS SOLD (RE: MAKE, MODEL, YEAR, HOURS, MILES, OR MERCHANTABILITY BY AUCTIONEER OR SELLER). BUYERS RESPONSIBILITY TO INSURE PROPER USE FOR SAFETY.

ALL ITEMS ARE SOLD AS "PARTS ONLY"

BUYER ACKNOWLEDGES THAT THE GOODS ARE PRE-OWNED AND GOODS WERE NEITHER DESIGNED NOR MANUFACTURED BY SELLER. SELLER HAS NO KNOWLEDGE OF OR CONTROL OVER THE PRIOR USE OR MISUSE OF THE GOODS OR ANY MODIFICATIONS TO THE GOODS FOLLOWING ORIGINAL MANUFACTURE. NEITHER DOES SELLER HAVE KNOWLEDGE OR CONTROL OVER THE APPLICATION OF THE GOODS BY BUYER. IT IS THE BUYER'S SOLE RESPONSIBILITY TO PROVIDE PROPER SAFETY DEVICES, EQUIPMENT AND INSTRUCTIONS FOR ANY PARTICULAR USE OR TAKE NECESSARY STEPS TO CONFORM THE GOODS AND OPERATION THEREOF TO ALL FEDERAL, STATE OR LOCAL GOVERNMENT SAFETY STANDARDS AND LAWS INCLUDING WITHOUT LIMITATION THE OCCUPATIONAL SAFETY AND HEALTH ACT OF "OSHA". ANNOUNCEMENTS MADE BY THE AUCTIONEER ON THE DAY OF THE AUCTION TAKE PRECEDENCE OVER ANY PREVIOUS PRINTED MATERIAL PERTAINING TO THIS AUCTION. AUCTIONEER RESERVES THE RIGHT TO REMOVE OR ADD TO ANY AUCTION ITEMS ON THE LIST UNTIL AUCTION TIME.

	<p><b>LIVE WEBCAST ONLINE ONLY NO ONSITE BIDDING</b></p> <p><b>JUNE 30, 2026 ~ AUCTION</b></p>	
--	--	--