



1146 N Central Avenue #535
 Glendale, California 91202
 Phone:
 818.763.2021

PUBLIC AUCTION

AUCTION DATE:
 TUESDAY MAY 5, 2026 @ 11:00 A.M. PT

AUCTION LOCATION:
 13201 S. ALAMEDA ST. COMPTON, CA

LARGE CAPACITY CNC MACHINING & TURNING FACILITY

INSPECTION : MORNING OF SALE
 FROM 8:00AM TO 11:00AM.
 "Live Webcast Online Only - No Onsite Bidding".
 "Bidding thru Bidspotter.com".

PRESORTED
 Standard Mail
 U.S. Postage
PAID
 STA CLARITA, CA
 Permit No. 298

LARGE TURNING AND MACHINING



52" X 240"

LeBlond 52" x 240" Geared Head Engine Lathe w/ 1.5-240 RPM, Taper Attach, Inch Threading, Tailstock, Steady Rest, 47" Chuck



12,000 RPM

2004 Haas VM-2 Mold Makers 5-Axis Capable CNC VMC w/ 24-Station ATC, CAT-40, 12,000 RPM, Rigid Tapping, Thru Spindle Coolant



MUST SEE

HAAS CNC MACHINING DEPARTMENT

MUST SEE



Haas VF-8 CNC VMC w/ 20-Station ATC, CAT-40, 10,000 RPM, Rigid Tapping, Programmable Coolant

MUST SEE



Haas VF-4 4-Axis CNC VMC w/ Haas Controls, 20-Station ATC, CAT-40, 7500 RPM, Rigid Tapping

2004



2004 Haas VM-2 Mold Makers 5-Axis Capable CNC VMC w/ 24-Station ATC, CAT-40, 12,000 RPM, Rigid Tapping, Thru Spindle Coolant



Haas HA5C2 4th Axis 2-Head 5C Rotary Indexer

CNC Machines :

Dec/2004 Haas VM-2 Mold Makers 5-Axis Capable CNC Vertical Machining Center s/n 39216 w/ Haas Controls, Hand Wheel, 24-Station ATC, CAT-40 Taper Spindle, 12,000 RPM, Rigid Tapping, Thru Spindle Coolant, Programmable Coolant Nozzle, Quick Code, Haas Vector Drive, Chip Auger, 25" x 54" T-Slot Top Plate, Coolant.

Haas VF-8 CNC Vertical Machining Center s/n 17764 w/ Haas Controls, 20-Station TC, CAT-40 Taper Spindle, 10,000 RPM, Rigid Tapping, Programmable Coolant Nozzle, Quick Code, Haas Vector Drive, Chip Auger, Coolant.

Haas VF-4 4-Axis CNC Vertical Machining Center s/n 37698 w/ Haas Controls, 20-Station ATC, CAT-40 Taper Spindle. 7500 RPM, Rigid Tapping, Rotation and Scaling, Chip Auger, Coolant.

Victor 2080 DCL 20" x 80" CNC Lathe w/ Fanuc Series 20T Controls, Tailstock, Steady Rest, 12" 3-Jaw Chuck.

Lathes :

LeBlond 52" x 240" Geared Head Engine Lathe w/ 1.5-240 RPM, Taper Attachment, Inch Threading, Tailstock, Steady Rest, 47" 4-Jaw Chuck.

HES Jupiter 830 31" x 156" Gap Bed Lathe w/ 25-1600 RPM, 40" Swing @ Opening, Inch/mm Threading, Tailstock, 28" 4-Jaw Chuck.

Reed-Prentice 22" x 108" Geared Head Lathe w/ Inch Threading, Tailstock, Steady Rest, 18" 4-Jaw Chuck, 12" 3-Jaw Chuck.

LeBlond Regal 15 1/2" x 80" Geared Head Lathe w/ 45-1800 RPM, Inch Threading, Tailstock, 10" 3-Jaw Chuck.

Lodge & Shipley 32" x 72" Engine Lathe w/ 7.5-422 RPM, Inch Threading, Tailstock, 24" 4-Jaw Chuck.

Elliott M680/2500 17" x 48" Gap Bed Lathe w/ Mitutoyo DRO, inch/mm Threading, Taper Attachment, Tailstock, 8" 3-Jaw Chuck.

Dianichi DLG-SBH Geared Head Lathe w/ 18-1600 RPM, 3 1/2" Thru Bore, Taper Attachment, Inch/mm Threading, Tailstock, Indexing Tool Post, 19 1/2" 3-Jaw Chuck. Southbed mdl. A 10" x 24" Lathe w/ Inch Threading, Tailstock, 6" 3-Jaw Chuck.

Mills :

Ceruit AC100 Horizontal Boring Mill w/ Acu-Rite Master Mill 3-Axis DRO, 12-1200 RPM, 4" Spindle, 51" x 44" Table.

Shibaura BT-8c Horizontal Boring Mill w/ Pathfinder DRO, 20-1000 RPM, 3 1/4" Spindle, 35 1/2" x 41 1/2" Table.

Bridgeport Vertical Mill s/n 265185 w/ Sargon DRO, 2Hp, 60-4200 Dial RPM, Chrome Ways, Power Feed, 9" x 48" Table.

Kent Vertical Mill w/ Bridgeport Vertical Milling Head, 80-2720 RPM Shaping Attachment.

Wells Index Vertical Mill w/ Anilam DRO, 50-4200 RPM, Power Fed, 9" x 47" Table. Milwaukee mdl. H Horizontal Mill w/ Pathfinder DRO, Bridgeport Vertical Milling Head, 50-Taper Horizontal Spindle, Power Feeds, 10" x 50" Table.

20" X 80"



Victor 2080 DCL 20" x 80" CNC Lathe w/ Fanuc 20T Controls, Tailstock, Steady Rest, 12" 3-Jaw Chuck

LARGE CAPACITY TURNING & MACHINING

PRECISION



Dianichi DLG-SBH Geared Head Lathe w/ 18-1600 RPM, 3 1/2" Thru Bore, Taper Attach, Inch/mm Threading, Tailstock, 19 1/2" Chuck

31" X 156"



HES Jupiter 830 31" x 156" Gap Bed Lathe w/ 25-1600 RPM, 40" Swing @ Opening, Inch/mm Threading, Tailstock, 28" Chuck

PRECISION



Shibaura BT-8c Horizontal Boring Mill w/ Pathfinder DRO, 20-1000 RPM, 3 1/4" Spindle, 35 1/2" x 41 1/2" Table

51" X 44" TABLE



Cervit AC100 Horizontal Boring Mill w/ Acu-Rite Master Mill 3-Axis DRO, 12-1200 PM, 4" Spindle, 51" x 44" Table

LARGE SELECTION



Vertical Mills

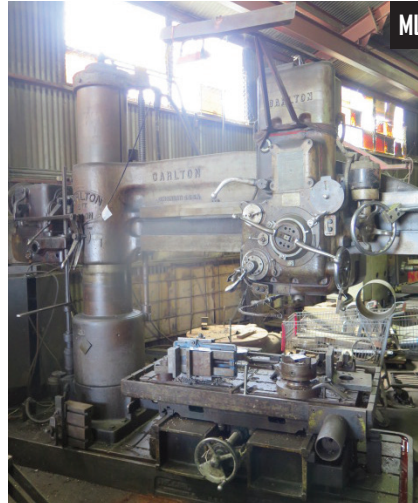


Miller Welding Power Sources

PUBLIC AUCTION



Amada HA-400 Automatic Hydraulic Horizontal Band Saw



Carlton 15" Column x 6' Radial Arm Drill



Giddings & Lewis 19" Column x 7' Radial Arm Drill



LeBlond Regal 15 1/2" x 80" Geared Head Lathe w/ 45-1800 RPM, Inch Threading, Tailstock, 10" 3-Jaw Chuck



Toyota 4000 Lb Cap LPG Forklift w/ 2-Stage Tall Mast




MUST SEE

MUST SEE

4000 LP CAP

Support Machinery :

- Amada HA-400 Automatic Hydraulic Horizontal Band Saw s/n 40300033 w/ Amada Controls, Hydraulic Clamping, Auto Feed, Coolant, Conveyor.
- G.H. Gray Double-Housing Horizontal Planer w/ 32" x 102" Table.
- Giddings & Lewis 19" Column x 7' Radial Arm Drill w/ 8-1000 RPM, Power Column and Feeds, 40" x 84" Table.
- Carlton 15" Column x 6' Radial Arm Drill w/ 15-1500 RPM, Power Column and Feeds, 33" x 61 1/2" Table.
- Davis mdl. 5 Vertical Key Seater s/n 5-1286 w/ 20 1/2" x 31" Table.
- Reid 6" x 18" Surface Grinder w/ 6" x 18" Magnetic Chuck.
- Burr King mdl. 760 2" Belt Sander w/ Stand.
- Baldor Pedestal Carbide Tool Grinder.
- 12" Pedestal Grinder.
- Baldor 10" Pedestal Grinder.
- Craftsman 8" Pedestal Grinder.
- Baldor 6" Pedestal Grinder.
- Leonard Tool Lapping Machine.
- H-Frame Press.
- (3) Walker Turner Bench Model Drill Presses.
- Ingersoll Rand Horizontal Air Compressor w/ 2-Stage Pump, (2) 80 Gallon Tanks.
- Welding :**
- Miller Deltaweld 452 CV-DC Arc Welding Power Source w/ Miller 60-Series Wire Feeder.
- Miller Deltaweld 451 CV-DC Arc Welding Power Source w/ Cobramatic Wire Feed.
- Miller Deltaweld 450 CV-DC Arc Welding Power Source.
- Miller Syncrowave 351 CC-AC/DC Arc Welding Power Source w/ Miller Coolmate V3 Cooler.
- Linde CC-301 55 Arc Welding Power Source.
- Worthington 25H 2500 Lb Cap 36" Welding Positioner s/n 54576.
- Tooling :**
- (150) CAT-40 Taper Tooling.
- (13) Kurt 6" Angle-Lock Vises.
- (2) 5C Indexing Heads.
- 50" Tilting Rotary Table.
- Troyke 28" Rotary Table.

	<p>BID ON BIDSPOTTER.COM</p>	<p>TERMS OF SALE: CASH OR CASHIER'S CHECK. ONLY. 15% BUYERS PREMIUM ON ALL PURCHASES \$200.00 REFUNDABLE CASH DEPOSIT. 2% CASH DEPOSIT TOWARDS ALL PURCHASES. ALL SALES ARE SUBJECT TO CALIFORNIA SALES TAX. THERE WILL BE NO EXCEPTIONS.</p>	<p>BID LIVE OR VIA WEBCAST</p> 	<p>TERMS AND CONDITIONS ALL ITEMS ARE SOLD AS-IS / WHERE - IS NO GUARANTEES, OR WARRANTIES ARE APPLIED ALL ITEMS MUST BE PICKED UP BY SPECIFIED DATE</p>	
-------------------------------------------------------------------------------------	-------------------------------------	------------------------------------------------------------------------------------------------------------------------------------------------------------------------------------------------------------------------------------------------------	---------------------------------------------------------------------------------------------------------------------------	-----------------------------------------------------------------------------------------------------------------------------------------------------------------------------	---------------------------------------------------------------------------------------



PARTIAL & ABBREVIATED TERMS AND CONDITIONS OF AUCTION

ALL TERMS AND CONDITIONS BEHIND THE BIDDERS CARD SUPPLIED WILL APPLY TO ALL AUCTION SALE ITEMS AND FOR ALL PRIVATE NEGOTIATIONS. BY PARTICIPATING AND BIDDING AT AUCTION YOU ARE LEGALLY BINDING A CONTRACT WITH THE AUCTION COMPANY.

ALL INVOICES MUST BE PAID WITHIN 24 HOURS FROM AUCTION DATE. IT IS PROHIBITED TO BID ON ANY ITEM THAT CANNOT BE PAID IN FULL WITHIN 24 HOURS FROM AUCTION DATE. PAYMENTS MUST BE CASHIERS CHECK, WIRE TRANSFER, OR LETTER OF GUARANTEE FROM BANK. ALL ITEMS MUST BE REMOVED BY MAY 12, 2026 3:00 PM (PST) NO LOADING OR PICK UP ON SATURDAY AND SUNDAY. NO LOADING BY AUCTIONEER OR SELLER. BUYERS PREMIUM 18% FOR ALL ONLINE BIDDING ON BIDSPOTTER.COM. AUCTIONEER IS NOT RESPONSIBLE FOR MIS IDENTIFICATION OF ANY EQUIPMENT OR ASSETS BEING SOLD AT AUCTION EITHER BY VERBAL OR WRITTEN. IT IS THE BUYER'S RESPONSIBILITY TO INSPECT THE GOODS AND ASCERTAIN IF THE SPECIFICATIONS, DESCRIPTIONS AND CONDITION OF THE GOODS CONFORM TO THE BUYER'S REQUIREMENT INCLUDING SERIAL NUMBERS.

BUYER ACKNOWLEDGES THAT THE EQUIPMENT OR ITEMS PURCHASED ONCE MAY HAVE CONTAINED, EXPOSED TO, AND OR UTILIZED HAZARDOUS MATERIAL. THERE MAY BE SURFACES ON ITEMS WHERE DECONTAMINATION CANNOT BE VALIDATED: AS SUCH, THE BUYER OR BIDDER ACKNOWLEDGING THAT THEY ARE ACCEPTING THIS EQUIPMENT OR ITEMS IN AN "AS IS" CONDITION.

BUYER AND THEIR ASSOCIATES WILL HOLD AUCTIONEER AND "THE SELLER" HARMLESS AGAINST ANY AND ALL CLAIMS AND ACTIONS ARISING OUT OF THE PARTICIPATION OF THE INDEMNITEE IN THE ACTIVITY, INCLUDING, WITHOUT LIMITATION, EXPENSES, JUDGEMENTS, FINES, SETTLEMENTS AND OTHER AMOUNTS INCURRED IN CONNECTION WITH ANY LIABILITY, SUIT, ACTION, LOSS, OR DAMAGE ARISING OR RESULTING FROM THE INDEMNITEE'S PARTICIPATION IN THE AUCTION. ALL BIDDERS MUST ONLY USE APPROVED MACHINERY MOVERS BY SELLER WITH LIABILITY INSURANCE OF \$2,000,000 OR HIGHER. NO ITEMS SHALL BE REMOVED UNLESS PAID IN FULL AND ALL ITEMS SHALL BE REMOVED IN THE TIME ALLOCATED BY THE AUCTIONEER. ALL SALES ARE FINAL, AND ALL ITEMS ARE SOLD AS IS WHERE IS, WITH ALL FAULTS AND DEFECTS. THERE ARE NO GUARANTEE OR WARRANTY TO ANY ITEMS SOLD (RE: MAKE, MODEL, YEAR, HOURS, MILES, OR MERCHANTABILITY BY AUCTIONEER OR SELLER). BUYERS RESPONSIBILITY TO INSURE PROPER USE FOR SAFETY. ALL ITEMS ARE SOLD AS "PARTS ONLY" BUYER ACKNOWLEDGES THAT THE GOODS ARE PRE-OWNED AND GOODS WERE NEITHER DESIGNED NOR MANUFACTURED BY SELLER. SELLER HAS NO KNOWLEDGE OF OR CONTROL OVER THE PRIOR USE OR MISUSE OF THE GOODS OR ANY MODIFICATIONS TO THE GOODS FOLLOWING ORIGINAL MANUFACTURE. NEITHER DOES SELLER HAVE KNOWLEDGE OR CONTROL OVER THE APPLICATION OF THE GOODS BY BUYER. IT IS THE BUYER'S SOLE RESPONSIBILITY TO PROVIDE PROPER SAFETY DEVICES, EQUIPMENT AND INSTRUCTIONS FOR ANY PARTICULAR USE OR TAKE NECESSARY STEPS TO CONFORM THE GOODS AND OPERATION THEREOF TO ALL FEDERAL, STATE OR LOCAL GOVERNMENT SAFETY STANDARDS AND LAWS INCLUDING WITHOUT LIMITATION THE OCCUPATIONAL SAFETY AND HEALTH ACT OF "OSHA". ANNOUNCEMENTS MADE BY THE AUCTIONEER ON THE DAY OF THE AUCTION TAKE PRECEDENCE OVER ANY PREVIOUS PRINTED MATERIAL PERTAINING TO THIS AUCTION. AUCTIONEER RESERVES THE RIGHT TO REMOVE OR ADD TO ANY AUCTION ITEMS ON THE LIST UNTIL AUCTION TIME.

	<p>LIVE WEBCAST ONLINE ONLY NO ONSITE BIDDING</p> <p>MAY 5, 2026</p>	
-------------------------------------------------------------------------------------	------------------------------------------------------------------------------------	---------------------------------------------------------------------------------------