



1146 N Central Avenue #535
 Glendale, California 91202
 Phone:
 818-763-2021
 WWW.AAGAUCATION.COM

PUBLIC AUCTION

Auction Date:
THURSDAY APRIL 25, 2024 @ 11:00 a.m. PST
AUCTION LOCATION:
14901 DON JULIAN RD. CITY OF INDUSTRY, CA

CNC MACHINING & CRANKSHAFT MFG EQUIPMENT

PREVIEW
 MORNING OF SALE FROM 8:00a.m-11:00a.m
 "On-line bidding thru bidspotter.com".

Moved For The Convenience of Sale

PRESORTED
 First-Class Mail
 U.S. Postage
PAID
 STA CLARITA, CA
 Permit No. 298



Vertical Mills

CNC MACHINE TOOLS & TURNING

\$ 1 MILLION REPLACEMENT



American GFM "AMS-20 CNC 6000" CNC Crank Shaft Milling Machine w/ CNC Controls.



1998 Daewoo PUMA 450A CNC Turning Center w/ Fanuc 0-T Controls, 12-Station Turret, Hydraulic Tailstock, 15" Chuck

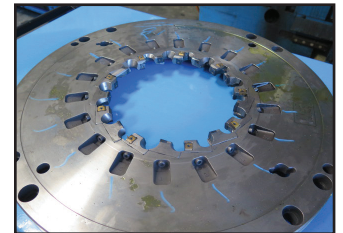
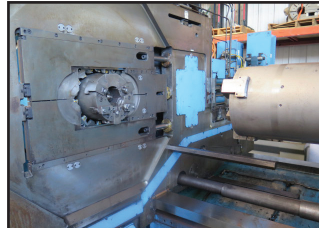


Berco RTM 225A40 Crank Shaft Grinder w/ SWI Trak DRO

PRECISION MACHINING/CRANKSHAFT MFG



American GFM "AMS-20 CNC 6000" CNC Crank Shaft Milling Machine w/ CNC Controls.



Fadal VMC4020HT 4-Axis CNC Vertical Machining Center s/n 8808659 (MISSING CONTROL BOARDS) w/ Fadal CNC88 Controls, 21-Station ATC, 40-Taper Spindle, 10,000 ROM, 20" x 48" Table.



Acra FVMC-810 CNC Vertical Machining Center s/n V3013 w/ Mitsubishi Controls, 16-Station ATC, 40-Taper Spindle, 17 1/2" x 39 1/2" Table

CNC Lathe :

1998 Daewoo PUMA 450A CNC Turning Center s/n PM450114 w/ Fanuc Series 0-T Controls, 12-Station Turret, Hydraulic Tailstock, 15" 3-Jaw Power Chuck, Chip Conveyor, Coolant.

Lathes :

Acra FEL-2060GNX 20" x 60" Geared Head Gap Bed Lathe w/ 32-1500 RPM, 3 1/8" Thru Spindle Bore. Inch/mm Threading, Tailstock, KDK Tool Post, 13" 3-Jaw Chuck.

Tuda TudaMax 19X51 19" x 51" Geared Head Gap Bed Lathe w/ 25-1800 RPM, 3" Thru Spindle Bore, Inch/mm Threading, Tailstock, Indexing Tool Post, 16" 3-Jaw Chuck.

Hwa Cheon 17"GX40 17" x 40" Geared Head Gap Bed Lathe w/ 32-1800 RPM, Inch Threading, Tailstock, 10" 3-Jaw Chuck.

LeBlond 16" x 42" Geared Head Lathe w/ 50-1850 RPM, Inch Threading, Tailstock, 12" 4-Jaw Chuck.

Monarch 10EE Tool Room Lathe s/n 11142 w/ 2500 RPM, Inch Threading, Tailstock, KDK Tool Post, 3-Jaw Chuck.



Okuma MX-60HB 2-Pallet 4-Axis CNC Horizontal Machining Center s/n 11020342 w/ Okuma OSP-U100M Controls, Tool Presetter, 60-Station ATC, CAT-50 Taper Spindle, 4 th Axis Thru Pallets, (2) 25" x 25" Pallets, Chip Conveyor, Coolant.

CONVENTIONAL/CNC MACHINING



Acra FEL-2060GNX 20" x 60" Gear-Gap Lathe w/ 32-1500 RPM, 3 1/8" Thru Spindle, Inch/mm Threading, Tailstock



Tuda TudaMax 19X51 19" x 51" Gear-Gap Lathe w/ 25-1800 RPM, 3" Thru Spindle, Inch/mm Threading, Tailstock, 16" Chuck

MANY TO CHOOSE FROM



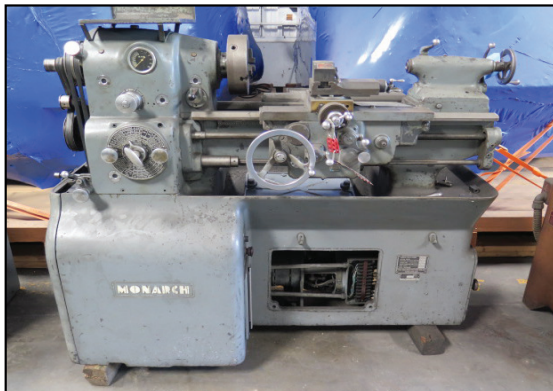
Surface Grinders



2000 Ganesh Deluxe GMV-3 3-Axis CNC Vertical Mill w/ Anilam 3300 MK Controls, 100-5200 RPM, Power Draw-Bar, Chrome Box Ways



2006 Atrump "A One" 3VK WVERTER 3-Axis CNC Vertical Mill w/ Centroid Controls, R8, Power Draw-Bar, Chrome Box Ways



Monarch 10EE Tool Room Lathe w/ 2500 RPM, Inch Threading, Tailstock, 3-Jaw Chuck



Partial View of Available Vertical Mills



Hansvedt SM-150B Die Sinker EDM Machine

CNC Lathe :

1998 Daewoo PUMA 450A CNC Turning Center s/n PM450114 w/ Fanuc Series 0-T Controls, 12-Station Turret, Hydraulic Tailstock, 15" 3-Jaw Power Chuck, Chip Conveyor, Coolant.

Lathes :

Acra FEL-2060GNX 20" x 60" Geared Head Gap Bed Lathe w/ 32-1500 RPM, 3 1/8" Thru Spindle Bore. Inch/mm Threading, Tailstock, KDK Tool Post, 13" 3-Jaw Chuck.

Tuda TudaMax 19X51 19" x 51" Geared Head Gap Bed Lathe w/ 25-1800 RPM, 3" Thru Spindle Bore, Inch/mm Threading, Tailstock, Indexing Tool Post, 16" 3-Jaw Chuck.

Hwa Cheon 17"GX40 17" x 40" Geared Head Gap Bed Lathe w/ 32-1800 RPM, Inch Threading, Tailstock, 10" 3-Jaw Chuck.

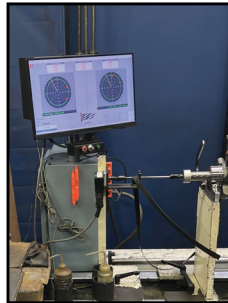
LeBlond 16" x 42" Geared Head Lathe w/ 50-1850 RPM, Inch Threading, Tailstock, 12" 4-Jaw Chuck.

Monarch 10EE Tool Room Lathe s/n 11142 w/ 2500 RPM, Inch Threading, Tailstock, KDK Tool Post, 3-Jaw Chuck.

PUBLIC AUCTION



Storm-Vulcan Kotafin Crank Shaft Polishing Machine



2007 Birmingham BPV-3949C Vertical Mill w/ Newall C80 DRO, 3Hp, 60-4200 RPM, Chrome Ways, Power Feed



Storm-Vulcan Kotafin Crank Shaft Polishing Machine



Wheelabrator Shot Blast Machine



Toyota Forklift

ALL MACHINERY MOVERS MUST BE APPROVED BY THE SELLER PRIOR TO REMOVAL OF EQUIPMENT



BID ON BIDSPOTTER.COM

TERMS OF SALE: CASH OR CASHIERS CHECK ONLY. 18% BUYERS PREMIUM ON ALL PURCHASES \$200.00 REFUNDABLE CASH DEPOSIT. 25% CASH DEPOSIT TOWARDS ALL PURCHASES. ALL SALES ARE SUBJECT TO NEVADA SALES TAX. THERE WILL BE NO EXCEPTIONS.

BID LIVE OR VIA WEBCAST



TERMS AND CONDITIONS
ALL ITEMS ARE SOLD AS-IS / WHERE - IS
NO GUARANTEES, OR WARRANTIES ARE APPLIED
ALL ITEMS MUST BE PICKED UP BY
SPECIFIED DATE



PARTIAL & ABBREVIATED TERMS AND CONDITIONS OF AUCTION

ALL TERMS AND CONDITIONS BEHIND THE BIDDERS CARD SUPPLIED WILL APPLY TO ALL AUCTION SALE ITEMS AND FOR ALL PRIVATE NEGOTIATIONS. BY PARTICIPATING AND BIDDING AT AUCTION YOU ARE LEGALLY BINDING A CONTRACT WITH THE AUCTION COMPANY.

ALL INVOICES MUST BE PAID WITHIN 24 HOURS FROM AUCTION DATE. IT IS PROHIBITED TO BID ON ANY ITEM THAT CANNOT BE PAID IN FULL WITHIN 24 HOURS FROM AUCTION DATE. PAYMENTS MUST BE CASHIERS CHECK, WIRE TRANSFER, OR LETTER OF GUARANTEE FROM BANK.

ALL ITEMS MUST BE REMOVED BY MAY 3, 2024 3:00 PM (PST)
NO LOADING OR PICK UP ON SATURDAY AND SUNDAY.

NO LOADING BY AUCTIONEER OR SELLER.

BUYERS PREMIUM 18% FOR ALL ONLINE BIDDING ON BIDSPOTTER.COM. AUCTIONEER IS NOT RESPONSIBLE FOR MIS IDENTIFICATION OF ANY EQUIPMENT OR ASSETS BEING SOLD AT AUCTION EITHER BY VERBAL OR WRITTEN. IT IS THE BUYER'S RESPONSIBILITY TO INSPECT THE GOODS AND ASCERTAIN IF THE SPECIFICATIONS, DESCRIPTIONS AND CONDITION OF THE GOODS CONFORM TO THE BUYER'S REQUIREMENT INCLUDING SERIAL NUMBERS.

BUYER ACKNOWLEDGES THAT THE EQUIPMENT OR ITEMS PURCHASED ONCE MAY HAVE CONTAINED, EXPOSED TO, AND OR UTILIZED HAZARDOUS MATERIAL. THERE MAY BE SURFACES ON ITEMS WHERE DECONTAMINATION CANNOT BE VALIDATED: AS SUCH, THE BUYER OR BIDDER ACKNOWLEDGING THAT THEY ARE ACCEPTING THIS EQUIPMENT OR ITEMS IN AN "AS IS" CONDITION.

BUYER AND THEIR ASSOCIATES WILL HOLD AUCTIONEER AND "THE SELLER" HARMLESS AGAINST ANY AND ALL CLAIMS AND ACTIONS ARISING OUT OF THE PARTICIPATION OF THE INDEMNITEE IN THE ACTIVITY, INCLUDING, WITHOUT LIMITATION, EXPENSES, JUDGEMENTS, FINES, SETTLEMENTS AND OTHER AMOUNTS INCURRED IN CONNECTION WITH ANY LIABILITY, SUIT, ACTION, LOSS, OR DAMAGE ARISING OR RESULTING FROM THE INDEMNITEE'S PARTICIPATION IN THE AUCTION. ALL BIDDERS MUST ONLY USE APPROVED MACHINERY MOVERS BY SELLER WITH LIABILITY INSURANCE OF \$2,000,000 OR HIGHER. NO ITEMS SHALL BE REMOVED UNLESS PAID IN FULL AND ALL ITEMS SHALL BE REMOVED IN THE TIME ALLOCATED BY THE AUCTIONEER.

ALL SALES ARE FINAL, AND ALL ITEMS ARE SOLD AS IS WHERE IS, WITH ALL FAULTS AND DEFECTS.

THERE ARE NO GUARANTEE OR WARRANTY TO ANY ITEMS SOLD (RE: MAKE, MODEL, YEAR, HOURS, MILES, OR MERCHANTABILITY BY AUCTIONEER OR SELLER).

BUYERS RESPONSIBILITY TO INSURE PROPER USE FOR SAFETY.

ALL ITEMS ARE SOLD AS "PARTS ONLY"

BUYER ACKNOWLEDGES THAT THE GOODS ARE PRE-OWNED AND GOODS WERE NEITHER DESIGNED NOR MANUFACTURED BY SELLER. SELLER HAS NO KNOWLEDGE OF OR CONTROL OVER THE PRIOR USE OR MISUSE OF THE GOODS OR ANY MODIFICATIONS TO THE GOODS FOLLOWING ORIGINAL MANUFACTURE. NEITHER DOES SELLER HAVE KNOWLEDGE OR CONTROL OVER THE APPLICATION OF THE GOODS BY BUYER. IT IS THE BUYER'S SOLE RESPONSIBILITY TO PROVIDE PROPER SAFETY DEVICES, EQUIPMENT AND INSTRUCTIONS FOR ANY PARTICULAR USE OR TAKE NECESSARY STEPS TO CONFORM TO THE GOODS AND OPERATION THEREOF TO ALL FEDERAL, STATE OR LOCAL GOVERNMENT SAFETY STANDARDS AND LAWS INCLUDING WITHOUT LIMITATION THE OCCUPATIONAL SAFETY AND HEALTH ACT OF "OSHA". ANNOUNCEMENTS MADE BY THE AUCTIONEER ON THE DAY OF THE AUCTION TAKE PRECEDENCE OVER ANY PREVIOUS PRINTED MATERIAL PERTAINING TO THIS AUCTION. AUCTIONEER RESERVES THE RIGHT TO REMOVE OR ADD TO ANY AUCTION ITEMS ON THE LIST UNTIL AUCTION TIME.

LIVE WEBCAST ONLINE ONLY ~ NO ONSITE BIDDING
APRIL 25, 2024 @ 11:00 a.m.