



1146 N Central Avenue #535  
Glendale, California 91202  
Phone:  
818-763-2021  
WWW.AAGAUCION.COM

# "2 DAY" PUBLIC AUCTION

**Auction Date:**

**TUESDAY MARCH 19, & WEDNESDAY MARCH 20, 2024 @ 10:30 a.m.**

**AUCTION LOCATION:**

**11200 WRIGHT RD. LYNWOOD, CA**

## MAJOR METAL FABRICATION & MACHINING AND WELDING AUCTION

**Preview:**

**Monday March 18 from 9:00 a.m. to 3:00 p.m.**  
"On-line bidding thru [bidspotter.com](http://bidspotter.com)".

PRESORTED  
First-Class Mail  
U.S. Postage  
**PAID**  
STA CLARITA, CA  
Permit No. 298

**"TRADITIONAL  
ONSITE LIVE AUCTION"**

## LIVE ONSITE "2 DAY" AUCTION



Chicago 300-F-12 300 Ton x 12' Hydraulic Power Press  
Brake w/ Manual Back Gage



Broderson Carry Deck Cranes



JLG and Genie Electric Scissor Platform Lifts \*\*6-AVAILABLE



Lincoln Arc Welders \*\*OVER 30 AVAILABLE\*\*



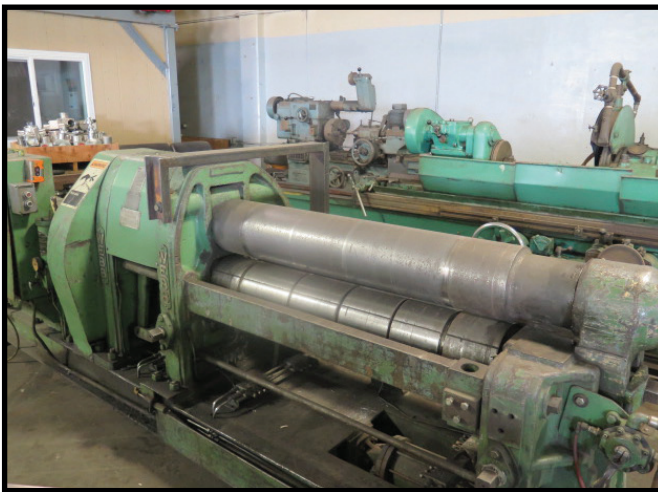
# METAL FABRICATION AND WELDING



Chicago 300-F-12 300 Ton x 12' Hydraulic Power Press Brake w/ Manual Back Gage



Amada 10' Power Shear w/ Dial Back Gauge



Webb 6L 50" x 5/8" Cap Power Plate Roll w/ 9" Rolls



10' Box and Pan Brake



Mubea KBI 2 1/2 F Universal Iron Worker



Cincinnati No.3 Press Brake



# CRANE DEPARTMENT

**MUST SEE**



Broderick RT200-3A 30,000 Lb Cap (On Outriggers) LPG Carry Deck Crane w/ 59' Reach



Broderick IC-80-3F 18,000 Lb Cap (On Outriggers) Diesel Carry Deck Crane w/ 40' Reach

**MUST SEE**



Broderick IC-35 8000 Lb Cap (On Outriggers) LPG Carry Deck Crane w/ 30' Reach, 26' Max Height

## **MUST SEE BRODERICK AND GROVE CARRY DECK CRANES**



Broderick Carry Deck Cranes



# FORKLIFTS AND SCISSOR LIFTS

MUST SEE



Clark LPG Forklifts

6 AVAILABLE



JLG and Genie Electric Scissor Platform Lifts  
\*\*6-AVAILABLE



Hyster H90XLS 7000 Lb Cap LPG Forklift w/ 2-Stage Mast, 119" Lift Height, Pneumatic Yard Tires



Caterpillar GP30 5300 Lb Cap LPG Forklift w/ 3-Stage Mast, Side Shift

MUST SEE



Hyster 18,000 Lb Cap Diesel Forklift w/ 2-Stage Mast, Pneumatic Tires



Komatsu 15,000 Lb Cap Diesel Forklift w/ 2-Stage Mast, Solid Yard Tires



# MACHINING AND TURNING MACHINE TOOLS



Mori Seiki MH-1500 24" x 60" Geared Head Gap Bed Lathe w/ 27-1205 RPM, Inch threading, Tailstock



Niles A54P 62" x 140" Lathe s/n 23579 w/ 3.94-232 RPM, Inch Threading, Tailstock, Steady Rest



TOS SUS-80 50" x 140" Geared Head Gap Bed Lathe w/ 9" Riser, 7.1-900 RPM, Inch/mm Threading, Tailstock



PBR TM-500 Big Bore Gap Bed Lathe w/ 90-800 RPM, 5 7/8" Thru Spindle Bore, Taper Attach, Inch/mm Threading, Tailstock



Hardinge TFB-H Wide Bed Second OP Lathe



Okuma LS 22" x 60" Geared Head Gap Bed Lathe w/ 35-1800 RPM, Inch Threading, Tailstock



LeBlond Regal 19" x 58" Geared Head Lathe w/ 40-1600 RPM, Inch Threading, Tailstock

## Lathes :

Niles A54P 62" x 140" Lathe s/n 23579 w/ 3.94-232 RPM, Inch Threading, Tailstock, Steady Rest, KDK Tool Post, 46" 4-Jaw Chuck.

TOS SUS-80 50" x 140" Geared Head Gap Bed Lathe w/ 9" Riser, 7.1-900 RPM, Inch/mm Threading, Tailstock, Tool Post, 24" 4-Jaw Chuck.

Axelson 46" x 172" Lathe w/ 8" Riser, 8-308 RPM, Taper Attach, Inch Threading, Tailstock, Steady Rest.  
Axelson 40" x 150" Lathe w/ 7" Riser, 8-308 RPM, Taper Attach, Inch Threading, Tailstock (NO TOOL POST SUPPORT).

PBR TM-500 Big Bore Gap Bed Lathe w/ 90-800 RPM, 5 7/8" Thru Spindle Bore, Taper Attach, Inch/mm Threading, Tailstock, Steady Rest, Tool Post, 35" 4-Jaw Chuck.

Ponar TUR-63 Geared Head Lathe w/ 4" Thru Spindle Bore, 18-1800 RPM, Taper Attach, Inch/mm Threading, Tailstock, Steady Rest, 20" 4-Jaw Chuck.

Monarch 25N 37" x 42" Geared Head Lathe s/n 12030 w/ 10-505 RPM, Inch Threading, Tailstock, 12" 4-Jaw Chuck.

Monarch 24" x 72" Lathe s/n 43865-AT w/ Inch Threading, Tailstock, 28" 4-Jaw Chuck.

Mori Seiki MH-1500 24" x 60" Geared Head Gap Bed Lathe w/ 27-1205 RPM, Inch Threading, Tailstock, Steady Rest, Tool Post, 14" 4-Jaw Chuck.

LeBlond Regal 22" x 110" Geared Head Lathe w/ 15-350 RPM, Taper Attach, Tailstock, Tool Post, 10" 4-Jaw Chuck.

Okuma LS 22" x 60" Geared Head Gap Bed Lathe w/ 35-1800 RPM, Inch Threading, Tailstock, Steady Rest, KDK Tool Post, 12" 3-Jaw Chuck.



# WELDING AND FABRICATING



Lincoln S-350 Power Wave Arc Welder w/ 10M Dual Wire Feed



Lincoln CV-655 Arc Welding Power Source w/ DN10 Dual Wire Feed



Lincoln Precision TIG 375 Arc Welder



Lincoln Vantage and Commander Towable Diesel Welding Generators  
\*\*5- AVAILABLE



Lincoln Welders \*\*OVER 30 AVAILABLE



Rigging Equipment

## Welding :

- (3) Lincoln Vantage 500 Towable Diesel Welding Generators.
- Lincoln Commander 500 Towable Diesel Welding Generator.
- Lincoln Commander 300 Towable Diesel Welding Generator.
- (2) Lincoln CV-655 Arc Welding Power Sources w/ Lincoln LN-10 Wire Feed.
- Lincoln CV-655 Arc Welding Power Source w/ Lincoln LN-9 Wire Feed.
- (2) Lincoln CV-655 Arc Welding Power Sources w/ Lincoln LN-7 Wire Feed.
- Lincoln FlexTec 450 Arc Welding Power Source w/ Lincoln LF-72 Wire Feed.
- Lincoln CV-400 Arc Welding Power Source w/ Lincoln LN-10 Wire Feed.
- (3) Lincoln CV-400 Arc Welding Power Sources w/ Lincoln LN-9 Wire Feed.
- Lincoln S-350 Power Wave Arc Welding Power Source w/n Lincoln 10M Dual Wire Feed.
- (2) ThermalArc 400MST Arc Welding Power Sources w/ VA2000 Wire Feed.
- Lincoln Precision TIG 375 Arc Welding Power Source.
- Lincoln Idealarc TIG 300/300 AC/DC Arc Welding Power Source.
- Lincoln Idealarc TIG 250/250 Arc Welding Power Source.
- Lincoln R3S-250 Arc Welding Power Source.
- (7) Lincoln Idealarc 250 Stick Welders.
- Miller and Airco Arc Welding Power Sources.
- (2) Esab Power Cut 1500 Plasma Power Sources.
- Hypertherm PowerMax 1100 Plasma Power Source.
- Lincoln Invertec V350 PRO Plasma Power Source.
- ThermalArc PAX 5XR Plasma Power Source.
- Hypertherm MAX 200 Plasma Power Source.
- 48" Welding Positioner.
- 24" Welding Positioner w/ 12" 3-Jaw Chuck.
- Motorized Barrel Rolls and Followers.



# MACHINING AND GRINDING



Okamoto Accugar-124N 12" x 24" Automatic Surface Grinder



Churchill 15" x 100" Cylindrical Grinder w/ Motorized Work Head, Tailstock



Ponar TUR-63 Geared Head Lathe w/ 4" Thru Spindle Bore, 18-1800 RPM, Taper Attach



Sharp - KMA VBM-3V  
Power Vertical Mill  
w/ Sony DRO



Okuma LS 22" x 60" Geared Head Gap Bed Lathe w/ 35-1800 RPM, Inch Threading, Tailstock



Harrison 10-AA Variable Speed 11" x 16" Tool Room Lathe



# 2 DAY PUBLIC AUCTION



1994 Ford F-Super Duty 12' Stake Bed Truck



Broderson Carry Deck Cranes



JLG and Genie Electric Scissor Platform Lifts  
\*\*6-AVAILABLE



Lincoln Arc Welders \*\*OVER 30 AVAILABLE

**ALL MACHINERY MOVERS MUST BE APPROVED BY THE SELLER PRIOR TO REMOVAL OF EQUIPMENT**



**BID ON BIDSPOTTER.COM**

**TERMS OF SALE:** CASH OR CASHIER'S CHECK ONLY. 18% BUYER'S PREMIUM ON ALL PURCHASES. \$200.00 REFUNDABLE CASH DEPOSIT. 25% CASH DEPOSIT TOWARDS ALL PURCHASES. ALL SALES ARE SUBJECT TO CALIFORNIA SALES TAX. THERE WILL BE NO EXCEPTIONS.

**BID LIVE OR VIA WEBCAST**



**TERMS AND CONDITIONS**  
ALL ITEMS ARE SOLD AS-IS / WHERE - IS NO GUARANTEE, OR WARRANTIES ARE APPLIED  
ALL ITEMS MUST BE PICKED UP BY SPECIFIED DATE



## PARTIAL & ABBREVIATED TERMS AND CONDITIONS OF AUCTION

ALL TERMS AND CONDITIONS BEHIND THE BIDDERS CARD SUPPLIED WILL APPLY TO ALL AUCTION SALE ITEMS AND FOR ALL PRIVATE NEGOTIATIONS. BY PARTICIPATING AND BIDDING AT AUCTION YOU ARE LEGALLY BINDING A CONTRACT WITH THE AUCTION COMPANY.

ALL INVOICES MUST BE PAID WITHIN 24 HOURS FROM AUCTION DATE. IT IS PROHIBITED TO BID ON ANY ITEM THAT CANNOT BE PAID IN FULL WITHIN 24 HOURS FROM AUCTION DATE. PAYMENTS MUST BE CASHIER'S CHECK, WIRE TRANSFER, OR LETTER OF GUARANTEE FROM BANK.

ALL ITEMS MUST BE REMOVED BY MARCH 29, 2024, 3:00 PM (PST)  
NO LOADING OR PICK UP ON SATURDAY AND SUNDAY.

NO LOADING BY AUCTIONEER OR SELLER

BUYER'S PREMIUM 18% FOR ALL ONLINE BIDDING ON BIDSPOTTER.COM.

AUCTIONEER IS NOT RESPONSIBLE FOR MIS IDENTIFICATION OF ANY EQUIPMENT OR ASSETS BEING SOLD AT AUCTION EITHER BY VERBAL OR WRITTEN. IT IS THE BUYER'S RESPONSIBILITY TO INSPECT THE GOODS AND ASCERTAIN IF THE SPECIFICATIONS, DESCRIPTIONS AND CONDITION OF THE GOODS CONFORM TO THE BUYER'S REQUIREMENT INCLUDING SERIAL NUMBERS.

BUYER ACKNOWLEDGES THAT THE EQUIPMENT OR ITEMS PURCHASED ONCE MAY HAVE CONTAINED, EXPOSED TO, AND/OR UTILIZED HAZARDOUS MATERIAL. THERE MAY BE SURFACES ON ITEMS WHERE DECONTAMINATION CANNOT BE VALIDATED: AS SUCH, THE BUYER OR BIDDER ACKNOWLEDGING THAT THEY ARE ACCEPTING THIS EQUIPMENT OR ITEMS IN AN "AS IS" CONDITION.

BUYER AND THEIR ASSOCIATES WILL HOLD AUCTIONEER AND "THE SELLER" HARMLESS AGAINST ANY AND ALL CLAIMS AND ACTIONS ARISING OUT OF THE PARTICIPATION OF THE INDEMNITEE IN THE ACTIVITY, INCLUDING, WITHOUT LIMITATION, EXPENSES, JUDGEMENTS, FINES, SETTLEMENTS AND OTHER AMOUNTS INCURRED IN CONNECTION WITH ANY LIABILITY, SUIT, ACTION, LOSS, OR DAMAGE ARISING OR RESULTING FROM THE INDEMNITEE'S PARTICIPATION IN THE AUCTION. ALL BIDDERS MUST ONLY USE APPROVED MACHINERY MOVERS BY SELLER WITH LIABILITY INSURANCE OF \$2,000,000 OR HIGHER. NO ITEMS SHALL BE REMOVED UNLESS PAID IN FULL AND ALL ITEMS SHALL BE REMOVED IN THE TIME ALLOCATED BY THE AUCTIONEER.

ALL SALES ARE FINAL, AND ALL ITEMS ARE SOLD AS IS WHERE IS, WITH ALL FAULTS AND DEFECTS.

THERE ARE NO GUARANTEE OR WARRANTY TO ANY ITEMS SOLD (RE: MAKE, MODEL, YEAR, HOURS, MILES, OR MERCHANTABILITY BY AUCTIONEER OR SELLER).

BUYER'S RESPONSIBILITY TO INSURE PROPER USE FOR SAFETY.

ALL ITEMS ARE SOLD AS "PARTS ONLY"

BUYER ACKNOWLEDGES THAT THE GOODS ARE PRE-OWNED AND GOODS WERE NEITHER DESIGNED NOR MANUFACTURED BY SELLER. SELLER HAS NO KNOWLEDGE OF OR CONTROL OVER THE PRIOR USE OR MISUSE OF THE GOODS OR ANY MODIFICATIONS TO THE GOODS FOLLOWING ORIGINAL MANUFACTURE. NEITHER DOES SELLER HAVE KNOWLEDGE OR CONTROL OVER THE APPLICATION OF THE GOODS BY BUYER. IT IS THE BUYER'S SOLE RESPONSIBILITY TO PROVIDE PROPER SAFETY DEVICES, EQUIPMENT AND INSTRUCTIONS FOR ANY PARTICULAR USE OR TAKE NECESSARY STEPS TO CONFORM THE GOODS AND OPERATION THEREOF TO ALL FEDERAL, STATE OR LOCAL GOVERNMENT SAFETY STANDARDS AND LAWS INCLUDING WITHOUT LIMITATION THE OCCUPATIONAL SAFETY AND HEALTH ACT OF "OSHA". ANNOUNCEMENTS MADE BY THE AUCTIONEER ON THE DAY OF THE AUCTION TAKE PRECEDENCE OVER ANY PREVIOUS PRINTED MATERIAL PERTAINING TO THIS AUCTION. AUCTIONEER RESERVES THE RIGHT TO REMOVE OR ADD TO ANY AUCTION ITEMS ON THE LIST UNTIL AUCTION TIME.

**LIVE WEBCAST AND LIVE ONSITE BIDDING**  
**TWO DAY AUCTION MARCH 19TH AND 20TH 2024 @ 10:30 a.m.**