



1146 N Central Avenue #535
 Glendale, California 91202
 Phone:
 818-763-2021
 WWW.AAGAUCATION.COM

PUBLIC AUCTION

Auction Date:
THURSDAY OCTOBER 26, 2023 @ 10:30 a.m. PST
8606 SULTANA AVE, FONTANA CA

LARGE CAPACITY HORIZONTAL HONING AND MACHINING FACILITY

Preview : Wednesday October 25,2023
 from 9:00 a.m. to 3:00 p.m

PRESORTED
 First-Class Mail
 U.S. Postage
PAID
 STA CLARITA, CA
 Permit No. 298



Toyota 7FGCO45 10,000 Lb
 Cap LPG Forklift s/n 60176 w/
 2-Stage Mast, 132" Lift Height,
 Pneumatic Yard Tires.

LARGE CAPACITY HONING AND MACHINING



16" BORE
 LeBlond Model 5GR-10A-25-S Hollow Spindle 36" x 288"
 Lathe w/ 16" Thru Spindle Bore, 5-250 RPM, 16" Hollow
 Spindle, Steady Rest, Steady Rest, 29" 4-Jaw Chuck.



2014
 2014 International 20' Stake-Bed Truck Lisc# HONING1
 w/ California Emissions Compliant Diesel Engine,
 Automatic Trans, 6 th Gear, Air Brakes, 195,976 Miles, VIN#
 1HTMMMMN5FH710687.



MUST SEE
 Axelson 25 25" x 120" Gered Head Lathe s/n 2778 w/ 6-555
 RPM, Inch Threading, Tailstock, Steady Rest, Tool Post, 2 1/4"
 Thru Spindle Bore, 16' Bed Length, 120" Between Centers.



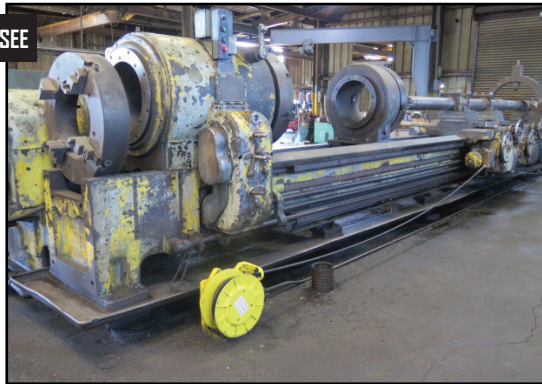
MUST SEE
 Axelson 32 48" x 168" Geared Head Lathe s/n 1644 w/ 16"
 Extension, 6-555 RPM, Inch Threading, Tailstock, Steady
 Rest, KDK Tool Post, 2 3/8" Thru Spindle Bore, 36" 4-Jaw
 Chuck. Threading, Tailstock, Steady Rest, 4" Thru Spindle
 Bore, Aloris Tool Post, 24" 4-Jaw Chuck.

LARGE CAPACITY TURNING AND MILLING



MUST SEE

LeBlond Model 4GSR-10A-242-S Treepan Lathe w/ 43.5-210 RPM, 2"-10" ID Cap, 24" Max OD, 30" Travel Depth, 28" 4-Jaw Chuck, Hollow Steady Rests, Coolant.



LeBlond Model 5GR-10A-25-S Hollow Spindle 36" x 288" Lathe w/ 16" Thru Spindle Bore, 5-250 RPM, 16" Hollow Spindle, Steady Rest, Steady Rest, 29" 4-Jaw Chuck.



MUST SEE

Cincinnati Gilbert Horizontal Boring Mill s/n 1024 / Newall DP7 3-Axis Programmable DRO, 16.5-1000 RPM, 3 1/2" Spindle, 50-Taper Spindle, 53" x 78 1/2" Table.



TUR 630A Big Bore Geared Head Lathe s/n 60006 w/ 5 7/16" Thru Spindle Bore, 15-1400 RPM, Inch/mm Threading, Tailstock, (2) Steady Rests, KDK Tool Post, 19" 4-Jaw Chuck, 15 1/2" 3-Jaw Chuck.

Lathes :

LeBlond Hollow Spindle 36" x 288" Lathe w/ 16" Thru Spindle Bore, 5-250 RPM, 16" Hollow Spindle, Steady Rest, Steady Rest, 29" 4-Jaw Chuck.

Axelson 32 "Raised 14" 59" x 120" Lathe s/n 3778 w/ 3-310 RPM, Inch Threading, Tailstock, Steady Rest, 120" Between Centers, 36" 4-Jaw Chuck.

Betts Bridgeford 41" x 320" Lathe s/n E506910 w/ 7-166 RPM, Inch Threading, Tailstock, Steady Rest, Tool Post, 28" 4-Jaw Chuck.

Axelson 32 48" x 168" Geared Head Lathe s/n 1644 w/ 16" Extension, 6-555 RPM, Inch Threading, Tailstock, Steady Rest, KDK Tool Post, 2 3/8" Thru Spindle Bore, 36" 4-Jaw Chuck.

Lion C13/MB 32" x 230" Geared Head Lathe s/n 13MH-5000-80039 w/ 6-1000 RPM, Inch/mm Threading, Tailstock, Steady Rest, 4" Thru Spindle Bore, Aloris Tool Post, 24" 4-Jaw Chuck.

Lodge & Shipley 24" x 280" Lathe w/ 4-Speeds, Inch Threading, Tailstock, 24" 4-Jaw Chuck.

TUR 630A Big Bore Geared Head Lathe s/n 60006 w/ 5 7/16" Thru Spindle Bore, 15-1400 RPM, Inch/mm Threading, Tailstock, (2) Steady Rests, KDK Tool Post, 19" 4-Jaw Chuck, 15 1/2" 3-Jaw Chuck.

Cazeneuve HB725 26" x 154" Geared Head Gap Bed Lathe w/ 3 1/8" Thru Spindle Bore, Inch/mm Threading, Tailstock (2) Steady Rests, Tool Post, 24" 4-Jaw Chuck, 15" 3-Jaw Chuck.

Axelson 25 25" x 120" Geared Head Lathe s/n 2778 w/ 6-555 RPM, Inch Threading, Tailstock, Steady Rest, Tool Post, 2 1/4" Thru Spindle Bore, 16' Bed Length, 120" Between Centers.

Axelson 20 20" x 90" Geared Head Lathe s/n 2339 w/ 9.5-721 RPM, Inch Threading, Tailstock, Tool Post, 2 1/4" Thru Spindle Bore, 91" Between Centers, 16" 4-Jaw Chuck.

Shoun-Cazeneuve 22" x 58" Geared Head Lathe s/n C663799 w/ 25-2000 RPM, Inch Threading, Tailstock, KDK Tool Post.

Axelson 16 16" x 102" Geared Head lathe s/n 1332 w/ 13-849 RPM, Inch Threading, Tailstock, Steady Rest, 19" Swing, 102" Between Centers, 1 1/2" Thru Spindle Bore, Tool Post, 15" 4-Jaw Chuck, 12" 3-Jaw Chuck.

Axelson 16 16" x 54" Geared Head Lathe s/n 2276 w/ 13-849 RPM, Inch Threading, Tailstock, Tool Post, 19" Max Swing, 54" Between Centers, 10" 3-Jaw Chuck.

LeBlond "Dual Drive" 15" x 66" Lathe w/ 28-1800 RPM, Inch Threading, Tailstock, Tool Post, 10" 3-Jaw Chuck.

LeBlond 15" x 40" Lathe s/n L7810405 w/ 50-1850 RPM, Inch Threading, Tailstock, Tool Post, 12" 4-Jaw Chuck.



Lion C13/MB 32" x 230" Geared Head Lathe s/n 13MH-5000-80039 w/ 6-1000 RPM, Inch/mm Threading, Tailstock, Steady Rest, 4" Thru Spindle Bore, Aloris Tool Post, 24" 4-Jaw Chuck.



Cazeneuve HB725 26" x 154" Geared Head Gap Bed Lathe w/ 3 1/8" Thru Spindle Bore, Inch/mm Threading, Tailstock (2) Steady Rests, Tool Post, 24" 4-Jaw Chuck, 15" 3-Jaw Chuck.

HONING DEPARTMENT



Custom Built Horizontal Honing Machines w/ 13' Power Stroke, 1.5" to 36" Hone Cap, Coolant



Custom Built Horizontal Honing Machines w/ 12' Power Stroke, 1.5" to 14" Hone Cap, Coolant.



2 AVAILABLE

(2) Custom Built Horizontal Honing Machines w/ 20' Power Stroke, 1.5" to 16" Hone Cap, Coolant.



2 AVAILABLE

(2) Custom Built Hydraulic Horizontal Honing Machines w/ 5' Power Stroke, 1.5" to 14" Hone Cap, Coolant.



Large Selection of Honing Mandrels.

Honing Machines :

Custom Built Horizontal Honing Machines w/ 30' Power Stroke, 1.5" to 16" Hone Cap, Coolant.

(2) Custom Built Horizontal Honing Machines w/ 20' Power Stroke, 1.5" to 16" Hone Cap, Coolant.

Custom Built Horizontal Honing Machines w/ 13' Power Stroke, 1.5" to 36" Hone Cap, Coolant.

Custom Built Horizontal Honing Machines w/ 12' Power Stroke, 1.5" to 14" Hone Cap, Coolant.

(2) Custom Built Hydraulic Horizontal Honing Machines w/ 5' Power Stroke, 1.5" to 14" Hone Cap, Coolant.

Trepan Machines :

LeBlond Trepan Lathe w/ 43.5-210 RPM, 2"-10" ID Cap, 24" Max OD, 30" Travel Depth, 28" 4-Jaw Chuck, Hollow Steady Rests, Coolant.

W.F & John Barnes Trepan Lathe w/ 121-900 RPM, 96" Travel Depth to 6" Diameter, 17" Max OD, 24" 3-Jaw Chuck.

Mills :

Cincinnati Gilbert Horizontal Boring Mill s/n 1024 w/ Newall DP7 3-Axis Programmable DRO, 16.5-1000 RPM, 3 1/2" Spindle, 50-Taper Spindle, 53" x 78 1/2" Table.

Bridgeport Series 1 - 2Hp Vertical Mill s/n 192937 w/ 60-4200 Dial Change RPM, 7" Riser, Power Feed, 9" x 42" Table.

Bridgeport Series 1 - 2Hp Vertical Mill s/n 145020 w/ 60-4200 Dial Change RPM, 8" Riser, 9" x 42" Table.

Bridgeport Vertical Mill s/n 168439 w/ 2Hp Motor, 60-4200 Dial Change RPM, 7" Riser, 9" x 42" Table.

Cincinnati Cinova 80 205-12 Horizontal Mill s/n 31422U5U-5 w/ 25-2000 RPM, 50-Taper Spindle, Power Feeds, 12" x 56" Table.

Material Handling :

2014 International 20' Stake-Bed Truck Lisc# HONING1 w/ California Emissions Compliant Diesel Engine, Automatic Trans, 6 th Gear, Air Brakes, 195,976 Miles, VIN# 1HTMMMMN5FH710687.

Toyota 7FGCO45 10,000 Lb Cap LPG Forklift s/n 60176 w/ 2-Stage Mast, 132" Lift Height, Pneumatic Yard Tires.

Toyota 7FGCU32 6000 Lb Cap LPG Forklift s/n 62161 w/ 3-Stage Mast, 189" Lift Height, Solid Yard Tires, 9330 Hours.
(4637) Hyster 15,000 lb Forklift

PUBLIC AUCTION



Toyota 7FGCO45 10,000 Lb Cap LPG Forklift s/n 60176 w/ 2-Stage Mast, 132" Lift Height, Pneumatic Yard Tires.



Toyota 7FGCU32 6000 Lb Cap LPG Forklift s/n 62161 w/ 3-Stage Mast, 189" Lift Height, Solid YardTires, 9330 Hours.



Hyster 15,000 lb Forklift



Support :

Cincinnati Tool and Cutter Grinder w/ Compound Grinding Head, 6" x 12" Magnetic Chuck.

Thompson 6" x 18" Automatic Surface Grinder w/ Electromagnetic Chuck, Wheel Dresser, Coolant.

Baldor Carbide Tool Grinder.

Standard 10" Pedestal Grinder.

Black & Decker 10" Pedestal Grinder.
Baldor 8" Pedestal Grinder.

Baldor 6" Pedestal Grinder.

Delta Pedestal 6" Belt Sander.

DoAll 1612-U 16" Vertical Band Saw s/n 146-31579.

DoAll 12" Horizontal Band Saw w/ Manual Clamping, Coolant.

American Hole Wizard 13" Column x 36" Radial Arm Drill w/ 25-2000 RPM, Power Column and Feeds, 18" x 24" x 20" Tooling Block, Coolant.

Walker Turner Table-Mounted Drill Press w/ 25" x 56" x 1 1/2" Steel Table.

Lincoln Idealarc R3R-400 Arc Welding Power Source s/n AC-543543.

Lincoln Idealarc R3S-325 Arc Welding Power Source s/n ASC-689271.

Welding Torch Cart.
46" x 53" x 1" and 38" x 60" x 1/2" Welding Tables.

ALL MACHINERY MOVERS MUST BE APPROVED BY THE SELLER PRIOR TO REMOVAL OF EQUIPMENT



BID ON BIDSPOTTER.COM

TERMS OF SALE: CASH OR CASHIERS CHECK ONLY. 1% BUYERS PREMIUM ON ALL PURCHASES. \$200.00 REFUNDABLE CASH DEPOSIT. 25% CASH DEPOSIT TOWARDS ALL PURCHASES. ALL SALES ARE SUBJECT TO CALIFORNIA SALES TAX. THERE WILL BE NO EXCEPTIONS.

BID LIVE OR VIA WEBCAST

BidSpotter.com

TERMS AND CONDITIONS
ALL ITEMS ARE SOLD AS-IS / WHERE - IS
NO GUARANTEES, OR WARRANTIES ARE APPLIED
ALL ITEMS MUST BE PICKED UP BY
SPECIFIED DATE



PARTIAL & ABBREVIATED TERMS AND CONDITIONS OF AUCTION

ALL TERMS AND CONDITIONS BEHIND THE BIDDERS CARD SUPPLIED WILL APPLY TO ALL AUCTION SALE ITEMS AND FOR ALL PRIVATE NEGOTIATIONS. BY PARTICIPATING AND BIDDING AT AUCTION YOU ARE LEGALLY BINDING A CONTRACT WITH THE AUCTION COMPANY.

ALL INVOICES MUST BE PAID WITHIN 24 HOURS FROM AUCTION DATE. IT IS PROHIBITED TO BID ON ANY ITEM THAT CANNOT BE PAID IN FULL WITHIN 24 HOURS FROM AUCTION DATE. PAYMENTS MUST BE CASHIERS CHECK, WIRE TRANSFER, OR LETTER OF GUARANTEE FROM BANK.

ALL ITEMS MUST BE REMOVED BY NOVEMBER 10, 2023 3:00 PM (PST)
NO LOADING OR PICK UP ON SATURDAY AND SUNDAY.
NO LOADING BY AUCTIONEER OR SELLER.

BUYERS PREMIUM 18% FOR ALL ONLINE BIDDING ON BIDSPOTTER.COM. AUCTIONEER IS NOT RESPONSIBLE FOR MIS IDENTIFICATION OF ANY EQUIPMENT OR ASSETS BEING SOLD AT AUCTION EITHER BY VERBAL OR WRITTEN. IT IS THE BUYER'S RESPONSIBILITY TO INSPECT THE GOODS AND ASCERTAIN IF THE SPECIFICATIONS, DESCRIPTIONS AND CONDITION OF THE GOODS CONFORM TO THE BUYER'S REQUIREMENT INCLUDING SERIAL NUMBERS.

BUYER ACKNOWLEDGES THAT THE EQUIPMENT OR ITEMS PURCHASED ONCE MAY HAVE CONTAINED, EXPOSED TO, AND OR UTILIZED HAZARDOUS MATERIAL. THERE MAY BE SURFACES ON ITEMS WHERE DECONTAMINATION CANNOT BE VALIDATED: AS SUCH, THE BUYER OR BIDDER ACKNOWLEDGING THAT THEY ARE ACCEPTING THIS EQUIPMENT OR ITEMS IN AN "AS IS" CONDITION.

BUYER AND THEIR ASSOCIATES WILL HOLD AUCTIONEER AND 'THE SELLER' HARMLESS AGAINST ANY AND ALL CLAIMS AND ACTIONS ARISING OUT OF THE PARTICIPATION OF THE INDEMNITEE IN THE ACTIVITY, INCLUDING, WITHOUT LIMITATION, EXPENSES, JUDGEMENTS, FINES, SETTLEMENTS AND OTHER AMOUNTS INCURRED IN CONNECTION WITH ANY LIABILITY, SUIT, ACTION, LOSS, OR DAMAGE ARISING OR RESULTING FROM THE INDEMNITEE'S PARTICIPATION IN THE AUCTION. ALL BIDDERS MUST ONLY USE APPROVED MACHINERY MOVERS BY SELLER WITH LIABILITY INSURANCE OF \$2,000,000 OR HIGHER. NO ITEMS SHALL BE REMOVED UNLESS PAID IN FULL AND ALL ITEMS SHALL BE REMOVED IN THE TIME ALLOCATED BY THE AUCTIONEER. ALL SALES ARE FINAL, AND ALL ITEMS ARE SOLD AS IS WHERE IS, WITH ALL FAULTS AND DEFECTS. THERE ARE NO GUARANTEE OR WARRANTY TO ANY ITEMS SOLD (RE: MAKE, MODEL, YEAR, HOURS, MILES, OR MERCHANTABILITY BY AUCTIONEER OR SELLER). BUYERS RESPONSIBILITY TO INSURE PROPER USE FOR SAFETY. ALL ITEMS ARE SOLD AS "PARTS ONLY" BUYER ACKNOWLEDGES THAT THE GOODS ARE PRE-OWNED AND GOODS WERE NEITHER DESIGNED NOR MANUFACTURED BY SELLER. SELLER HAS NO KNOWLEDGE OF OR CONTROL OVER THE PRIOR USE OR MISUSE OF THE GOODS OR ANY MODIFICATIONS TO THE GOODS FOLLOWING ORIGINAL MANUFACTURE. NEITHER DOES SELLER HAVE KNOWLEDGE OR CONTROL OVER THE APPLICATION OF THE GOODS BY BUYER. IT IS THE BUYER'S SOLE RESPONSIBILITY TO PROVIDE PROPER SAFETY DEVICES, EQUIPMENT AND INSTRUCTIONS FOR ANY PARTICULAR USE OR TAKE NECESSARY STEPS TO CONFORM THE GOODS AND OPERATION THEREOF TO ALL FEDERAL, STATE OR LOCAL GOVERNMENT SAFETY STANDARDS AND LAWS INCLUDING WITHOUT LIMITATION THE OCCUPATIONAL SAFETY AND HEALTH ACT OF "OSHA". ANNOUNCEMENTS MADE BY THE AUCTIONEER ON THE DAY OF THE AUCTION TAKE PRECEDENCE OVER ANY PREVIOUS PRINTED MATERIAL PERTAINING TO THIS AUCTION. AUCTIONEER RESERVES THE RIGHT TO REMOVE OR ADD TO ANY AUCTION ITEMS ON THE LIST UNTIL AUCTION TIME.

LIVE WEBCAST ONLINE ONLY "NO ONSITE BIDDING"
OCTOBER 26, 2023 @ 10:30 a.m.