



AMERICAN AUCTIONEERS GROUP

1146 N Central Avenue #535  
Glendale, California 91202  
Phone:  
818-763-2021  
Fax: 818-291-9495  
WWW.AAGAUCTION.COM

# PUBLIC AUCTION

**Auction Date:**

**TUESDAY DECEMBER 7, 2021 @ 10:30 a.m. PST**

**AUCTION LOCATION:**

**1812 YAJOME STREET, NAPA, CA**

## STATE OF THE ART 4 & 5 AXIS CNC MACHINING FACILITY



Preview : Monday December 6, 2021  
from 9:00 a.m. to 4:00 p.m.  
And Morning of Sale from 8:00 a.m. to 10:30 a.m.  
"On-line bidding thru bidspotter.com".

PRESORTED  
First-Class Mail  
U.S. Postage

**PAID**

STA CLARITA, CA  
Permit No. 298

**BY ORDER OF OWNER RETIRING FOR TSCHIDA ENGINEERING, INC.**

**ULTRA PRECISION 5 AXIS CNC  
MACHINING FACILITY**



2006 Matsuura MAM 72-35V 5-Axis CNC VMC w/  
Matsuura G-Tech 16i Controls, 32-Station Pallet Changer,  
240-Station ATC, CAT-40 Spindle, 1000 PSI Pressure  
Coolant, Programable Tail Stock, Tool Monitoring, Fume  
Collector, True 5-Position Operation, 20,000 RPM Spindle



2) Matsuura H-Plus 300 in a 24 Linear Pallet System, 1000  
PSI Hi Pressure Coolant, CMM Probing, Full 4th Axis,  
Tool Monitoring, 240 / 320 Tools, 15k and 20K RPM, Fanuc  
16i and 30i Controls

Inspection : Monday December 6, 2021  
From 8:00 a.m. to 3:00 p.m. and  
Morning of Sale from 8:00 a.m. to 10:30 a.m.

# 5 AXIS CNC MACHINING DEPARTMENT



2006 Matsuura MAM72-35V 5-Axis CNC VMC w/ Matsuura G-Tech 16i Controls, 32-Station Pallet Changer, 240-Station ATC, CAT-40 Spindle, 1000 PSI Pressure Coolant, Programable Tail Stock, Tool Monitoring, True 5-Position Operation, 20,000 RPM Spindle

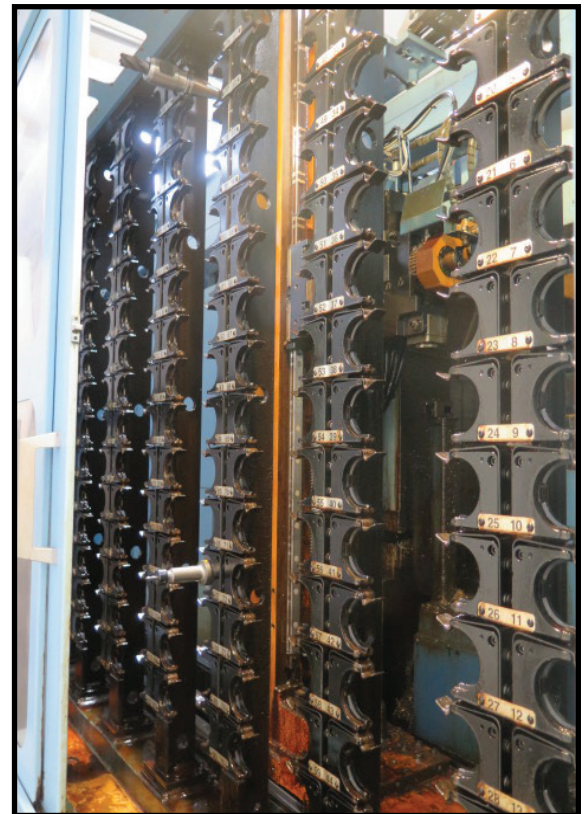
## CNC TOOL PRESSETING SYSTEM



Parlec Series 1500 "Parsetter TMM" mdl. P1500 Tool Presetting System w/ 40 & 50 Taper Adapter



2016 Abnox / Rego-Fix mdl. powerGrip PGU9500 40 Taper Tool Holding System w/ CAT-40 Tooling





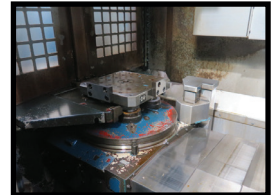
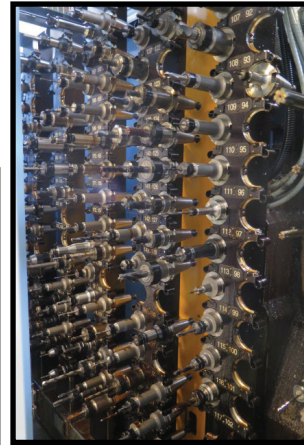
# MATSUURA 4 AXIS CELL SYSTEM



Matsuura Multi-Pallet CNC Machining Cell



Toolex Vise Tombstones



2) Matsuura H.Plus-300 in a 24 Linear Pallet System 4-Axis Horizontal Machining Center w/ Matsuura G-Teck 30i Controls, Renishaw NC4TX Laser Setting System, 240 / 320-Station ATC, CAT-40 Spindle, 15,000 and 20,000 RPM, CMM Probing Full 4 th Axis, High Pressure Coolant



2002 Matsuura Maxia PC-17 Maxia Cell Management System, 2 Machines, 26 Pallet System, 24-Pallet Stacker, w/ Fanuc Power Mate16i and 30i CNC Controls, Maxia WS-26-26 Cell Management System, Pallet Car



# PRECISION CNC TURNING & MACHINING



2015 Okuma "Space Turn" LB3000EX II CNC Live Turret Turning Center w/ Okuma OSP-P300L Controls, Presetter, 12-Station Live Turret, Tailstock, Full "C" Axis, "Y" Axis, Capto Tool Blocks, Hainbuch Collet Nose SK 65, Thermal Compensation, Navi-L-G Harmonics Spindle Speed Control, Synchronous Tapping, IGF Function



## OKUMA CNC TURNING



2003 Okuma "Twin Star" LT200-MY Twin Spindle - Twin Live Turret CNC Turning Center w/ Okuma OSP-E100L Controls, Main and Sub Spindle, Presetters, (2) 12-Station Live Turrets, "C" and "CI" Axes, 50 Millionths Upgrade, Hi Pressure 200 PSI Coolant, SIIGF Function



Okuma LB25 II-M CNC Live Turret Turning Center w/ Okuma OSP7000G Controls, 12-Station Live Turret, Hydraulic Tailstock, 3500 RPM, Live Tooling.

### CNC Lathes :

2015 Okuma "Space Turn" LB3000EX II CNC Live Turret Turning Center s/n 186824 w/ Okuma OSP-P300L Controls, Tool Presetter, 12-Station Live Turret, Hydraulic Tailstock, Full "C" Axis, "Y" Axis, 5000 RPM Spindle, 6000 RPM Live Turret, Thermal Compensation Speed Control, Navi-L-G Harmonics Spindle Speed Control, Synchronous Tapping, IGF Integrated Graphics Function (Programming), Parts Catcher, Sandvik C4-TRI-OK 60A Capto Tooling Holders, Mayfran Chip Conveyor, 2944 Run Hours, 2519 Spindle Hours, 2477 Cut Hours, Coolant, 2015 MP Systems MP1200 Type AT RF MC 1000 PSI High Pressure Coolant System and Fume Collection System s/n P41181.

2003 Okuma "Twin Star" LT200-MY Twin Spindle - Twin Live Turret CNC Turning Center s/n 07302111 w/ Okuma OSP-E100L Controls, Main and Sub Spindle Tool Presetters, (2) 12-Station Live Turrets, 6000 RPM Main, Sub and Live Tooling, "C" and "CI" Axes @ 360 Degrees To 0.001 Degrees, 50 Millionths Upgrade, Integrated Graphics Function (For Programming), MicroCentric 65BXI Collet Noses on Main and Sub Spindles, Parts Catcher, Enomoto Chip Conveyor, High Pressure Coolant, Rosedale Coolant Filtration Unit, 9781 Run Hours, 7004 Spindle Hours, 7359 Cut Hours, LNS Quickload Servo S3 Bar Loader / Feeder s/n 302235.

Okuma LB25 II-M CNC Live Turret Turning Center s/n 0332 w/ Okuma OSP7000G Controls, 12-Station Live Turret, Hydraulic Tailstock, 3500 RPM, (5) Live Radial and Axial Tooling, (2) Capto C4 Tooling Holders, 10" 3-Jaw Power Chuck, Henning Chip Conveyor, Coolant.

1998 Citizen Cincom 20 Type L-20 Swiss Type CNC Screw Machine s/n Q0988 w/ Citizen Controls, (3) Drill/Bore Stations, (6) Turning Stations, (4) Overhead Tool Holders, Parts Catcher, Chip Conveyor, Cool Blaster HD High Pressure Coolant System, Rosedale mdl. LCD-8 Coolant Filtration System, LNS Hydrobar Express 226 Hydraulic Bar Loader / Feeder.

1999 Citizen Cincom 20 Type L-20 Swiss Type CNC Screw Machine s/n Q10203 (PARTS MACHINE - NEEDS CONTROL BOARD) w/ Citizen Controls, (3) Drill/Bore Stations, (6) Turning Stations, (4) Overhead Tool Holders, Parts Catcher, Chip Conveyor, Cool Blaster HD High Pressure Coolant System, Rosedale mdl. LCD-8 Coolant Filtration System, LNS Hydrobar Express 226 Hydraulic Bar Loader / Feeder

# CNC SCREW MACHINES & SUPPORT



Citizen Cincom 20 Type L-20 Swiss Type CNC Screw Machine w/ Citizen Controls, (3) Drill/Bore Stations, (6) Turning Stations, (4) Overhead Tool Holders, 2000 PSI Cool Blaster HD High Pressure Coolant System



Okuma Crown V4018 CNC VMC w/ Okuma OSP-U10M Controls, 20-Station Side Mount ATC, CAT-40 Spindle, 12,000 RPM, Rigid Tapping, Thru Spindle Coolant



Citizen Cincom 20 Type L-20 Swiss Type CNC Screw Machine (PARTS MACHINE – NEEDS CONTROL BOARDS) w/ Citizen Controls 2152 1998 Citizen Cincom 20 Type L-20 Swiss Type CNC Screw Machine w/ Citizen Controls, (3) Drill/Bore Stations, (6) Turning Stations, (4) Overhead Tool Holders, 2000 PSI Cool Blaster HD High Pressure Coolant System



LNS Hydrobar Express 226 Hydraulic Bar Loader / Feeder

## FEATURING :

### CNC Mills :

2006 Matsuura MAM72-35V 5-Axis CNC Vertical Machining Center s/n 16485 w/ Matsuura G-Tech 16i Controls, 32-Station Pallet Changer, 240-Station ATC, CAT-40 Taper Spindle, True 5-Position Operation, 20,000 RPM Spindle, Daikin Oil Cooler, SMC Refrigerated Air Dryer, Fume Collector, Mosnic Chip Conveyor, High Flow Coolant System.

### Matsuura Multi-Pallet CNC Machining Cell :

2008 Matsuura H.Plus-300 4-Axis Horizontal Machining Center s/n 17780 w/ Matsuura G-Teck 30i Controls, Renishaw NC4TX Laser Setting System, 320-Station ATC, CAT-40 Taper Spindle, 20,000 RPM, 4 th Axis Thru Pallet, 11 ½" x 11 ½" Pallets, High Pressure Coolant System, CoolJet Coolant Filtration System, Turbo Chip Conveyor.

2002 Matsuura H.Plus-300 4-Axis Horizontal Machining Center s/n 020715110 w/ Matsuura G-Teck 16i Controls, Tool Pre-Setting System, 240-Station ATC, CAT-40 Taper Spindle, 15,000 RPM, 4 th Axis Thru Pallet, 11 ½" x 11 ½" Pallets, High Pressure Coolant System, Rosemont Coolant Filtration System, Turbo Chip Conveyor.

2002 Matsuura Maxia PC-17 24-Station Linear Pallet System s/n 020715110 w/ Fanuc Power Mate CNC Controls, Maxia WS-26-26 Cell Management System, (24) Pallet Stations, Pallet Loading Car, Tool Station.

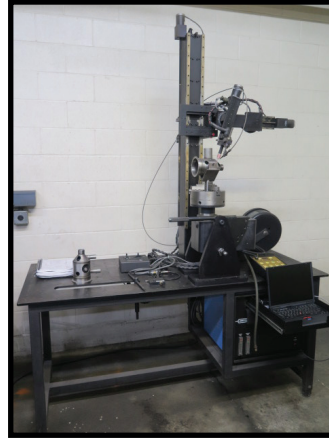
Okuma Crown V4018 CNC Vertical Machining Center s/n 0031 w/ Okuma OSP-U10M Controls, Hand Wheel, 20-Station Side Mount ATC, CAT-40 Taper Spindle, 12,000 RPM, Rigid Tapping, Thru Spindle Coolant, High Pressure Coolant, Coolant Filtration System, Henning Chip Conveyor.



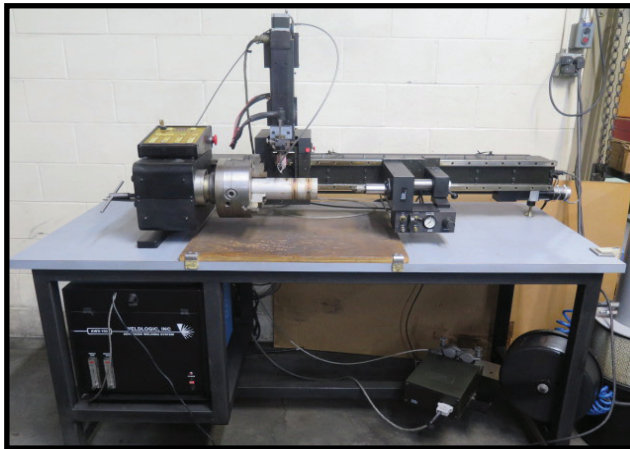
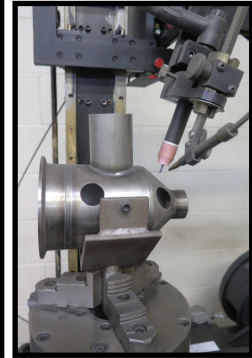
# ORBITAL & TIG WELDING DEPARTMENT



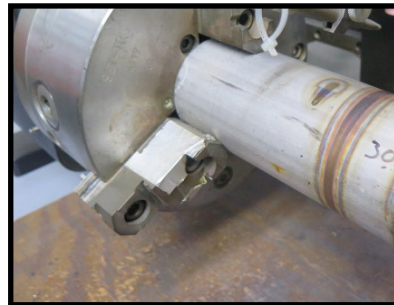
2000 AMI Arc Machine Inc. mdl. 207A Fusion Welding System



2005 Weld Logic Inc. PWL-15-4 Vertical CNC Tube Welder w/ Computer Controls, AWS Controller, PWL-Rotary Positioner with 8" 3-Jaw Chuck, AWS-150 Welding Power Source



2005 Weld Logic Inc. PWL-15C-36 14" Lathe Style CNC Tube Welder w/ Computer Controls, Pendant Controller, PWL-Rotary Positioner with 8" 3-Jaw Chuck and Tailstock, AWS-150 Welding Power Source Pendant Controller, PWL-Rotary Positioner with 8" 3-Jaw Chuck and Tailstock, AWS-150 Welding Power Source



Welders and Plasma Cutter

## Welding :

2005 Weld Logic Inc. PWL-15C-36 14" Lathe Style CNC Tube Welder w/ Computer Controls, AWS endant Controller, PWL-12/15/24-C/M-XX Rotary Positioner with 8" 3-Jaw Chuck and Tailstock, AWS-150 Welding Power Source, CFW-150/300 Wire Feeder, Table.

2005 Weld Logic Inc. PWL-15-4 Vertical CNC Tube Welder w/ Computer Controls, AWS Pendant Controller, PWL-12/15/24-C/M-XX Rotary Positioner with 8" 3-Jaw Chuck, AWS-150 Welding Power Source, CFW-150/300 Wire Feeder, Table.

2000 AMI Arc Machine Inc. mdl. 207A Fusion Welding System s/n 30868 w/ mdl. 227/207-C Control System, mdl. 09-4500 4.5" Cap Fusion Head, mdl. 8-2000 2" Cap Fusion Head, Misc Die Inserts.

Hobart RC-300 DC Arc Welding Power Source s/n 80WS-09218.

Thermal Dynamics – Thermal Arc PAK5 Plasma Cutting Power Source.

CK Worldwide mdl. WF-3 Cold Wire Feeder.

## Support Machinery :

Foba M-Series Laser Marking System w/ mdl. Y.0200 Controls s/n 1707/204, mdl.

M1000Y.0200 Laser Cabinet s/n MY1707-076, 9 1/2" x 19 1/2" Table, BL Baseline-99 18" x 18"

Fixture Table, Computer, FOBA MarkUS 2.11.25.0 Software Package.

(3) Overback mdl. LT-1B "Twister Speed Lathes" w/ 5C Spindle, Variable Spindle RPM, Foot Switch.

Clausing 2-Head Gang Drill Press w/ Clausing mdl. 15 Variable Speed Heads.

New Holland mdl. K24 Plain Heated Chip Spinner s/n 88296.

New Holland mdl. K11 Heated Chip Spinner s/n 985712.

Compact Coolant "WIZ Junior" Coolant Reconditioning System.

George Fischer +GF+ type RPG 1.5 Tube Facing and Chamfering Tool w/ 1/4", 3/8", 1/2", 5/8", 3/4", 1", 1 1/4" and 1 1/2" Clamping Dies.

(3) MiJet mdl. 14-8-545 "Clean Parts – Clean Air" 8" Parts Cleaning System.

MiJet mdl. 14-12-545 "Clean Parts – Clean Air" 12" Parts Cleaning System.

QL mdl. 40GC 225 Degree F Lab Oven.

(2) Vale mdl. E283 Ultrasonic Cleaning Tanks.



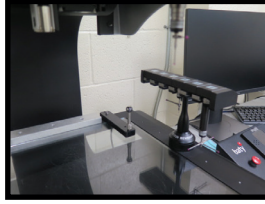
Large Selection of Carbide Tooling.



# INSPECTION DEPARTMENT



Fowler Baty Venture-3030XT Vision/CMM Machine w/ Video Feed Head, Renishaw MCR20 6-Station Probe Changer, Metrology Fusion MK4 3D Software



Wilson Instron 103R Rockwell Hardness Tester



Fowler Sylvac Z\_CAL 600XT 24" and Fowler Sylvac Hi\_CAL 300 12" Digital Height Gages



Foba M-Series Laser Marking System w/ Controls, Laser Cabinet, 9 1/2" x 19 1/2" Table, Computer, FOBA MarkUS 2.11.25.0 Software

## Inspection :

Fowler Baty "Venture XT" mdl. Venture-3030XT Vision/CMM Machine s/n 1695 w/ Video Feed Head, Renishaw Probe Head, Renishaw MCR20 6-Station Probe Changer, Probe Tip Access, X=11.8"(300mm), Y=11.8"(300mm), Z=7.9"9200mm), Metrology Fusion MK4 3D Software, Dual Monitors, Computer, Table.  
Mitutoyo PH-350 13" Optical Comparator s/n 60093 w/ Mitutoyo DRO, Mitutoyo Optoeye M1 Edge Zone Detector, Surface and Profile Illumination, Rolling Cabinet Base, Access.  
Wilson Instron mdl. 103R Rockwell Hardness Tester s/n 2523.  
Mitutoyo TM-101 Tool Makers Microscope s/n 60069 w/ Digital Micrometer Heads, Surface and Profile Illumination.  
Mitutoyo TM Tool Makers Microscope s/n A00011201 w/ Digital Micrometer Heads, Surface and Profile Illumination.  
(3) Meiji Stereo Microscope w/ Light Source.  
Fowler Sylvac Z\_CAL 600XT 24" Digital Height Gage w/ Access.  
Fowler Sylvac Hi\_CAL 300 12" Digital Height Gage w/ Access.  
Fowler Bowers XT Series 9"-10", 8"-9", 6"-8", 4"-6", 2"-4", 0.75"-2", 0.375"-0.75" Digital Bore Mics w/Setting Rings.  
Sunnen PG-800-E Precision Bore Gage.  
Sunnen PG-500-E 1.5"-2.9" Setting Fixture w/ Finger Extension Set.  
Sunnen PG-400-E 0.1"-1.5" Setting Fixture.  
Sunnen 1.18"-2.0" and .495"-.75" Dial Bore Gages (2).  
Mitutoyo 6"-12" OD Mic Set.  
Mitutoyo 16"-17" OD Mic.  
Mitutoyo 0-3" Indicating OD Mics, Thread Pitch Mic, Blade Mics, Disc Mics and OD Mics.  
Mitutoyo Gage Block Set.  
Johnson Dial Thread Gages.  
Mitutoyo and Fowler Digital Calipers to 18".  
Deltronic, Vermont and Meyer Pin Gage Sets.  
Starrett Crystal Pink 24" x 36" x 6 1/2" Grade "A" Granite Surface Plate w/ Rolling Cabinet Base.  
Starrett Crystal Pink 18" x 24" and (4) 12" x 12" Granite Surface Plates.



Mitutoyo PH-350 13" Optical Comparator w/ Mitutoyo DRO, Optoeye M1 Edge Zone Detector, Surface and Profile Illumination



Pritic Magnetic Polishing Machine w/ Pritic-M Controls, Pritic-MI Magnetic Field Generation Tank



Mitutoyo TM Tool Makers Microscope \*\*2-AVAILABLE\*\*



# PUBLIC AUCTION



Harig "618 Automatic" 6' x 18' Automatic Hydraulic Surface Grinder



New Holland Heated Chip Spinner



New Holland Heated Chip Spinner

## Grinding and Finishing :

Optima Precision Optical Drill Sharpener s/n 803 w/ Diamond Wheels, Split-Tip Attachment, Collet Chuck and (2) Finger Chucks, Flex Collet Sets and Grinding Wheels.

Harig "618 Automatic" 6' x 18' Automatic Hydraulic Surface Grinder s/n 5441-W w/ Walker 6' x 18' Fine-Line Electromagnetic Chuck.

Comco "ProCenter PLUS" mdl. PC1364 Micro Abrasive Blast Cabinet s/n CTR200-1 w/ Hepa Equipped Filtration System, Stand.

Pritic Magnetic Polishing Machine w/ Pritic-M Controls, Pritic-MI Magnetic Field Generation Tank, Access.

Burr King mdl. 600 Single Speed Deburring and Polishing Grinder w/ MotorMasters Variable Speed DC

Drive, Burr King Dust Collector.

Burr King mdl. 760 2" Belt Sander w/ Extended Belt Attachment, Burr King Dust Collector.

MSI Barrel Style Media Tumbler.



Marvel Vertical Tilting Band Saw



Burr King Deburring and Polishing Grinder and Burr King 2" Belt Sander w/ Burr King Dust Collectors

## ALL MACHINERY MOVERS MUST BE APPROVED BY THE SELLER PRIOR TO REMOVAL OF EQUIPMENT



BID ON BIDSPOTTER.COM

**TERMS OF SALE:** CASH OR CASHIERS CHECK ONLY. 16% BUYERS PREMIUM ON ALL PURCHASES \$500.00 REFUNDABLE CASH DEPOSIT. 25% CASH DEPOSIT TOWARDS ALL PURCHASES. ALL SALES ARE SUBJECT TO CALIFORNIA SALES TAX. THERE WILL BE NO EXCEPTIONS.

BID LIVE OR VIA WEBCAST



**TERMS AND CONDITIONS**  
ALL ITEMS ARE SOLD AS-IS / WHERE - IS  
NO GUARANTEES, OR WARRANTIES ARE APPLIED  
ALL ITEMS MUST BE PICKED UP BY  
SPECIFIED DATE



## PARTIAL & ABBREVIATED TERMS AND CONDITIONS OF AUCTION

ALL TERMS AND CONDITIONS BEHIND THE BIDDERS CARD SUPPLIED WILL APPLY TO ALL AUCTION SALE ITEMS AND FOR ALL PRIVATE NEGOTIATIONS. BY PARTICIPATING AND BIDDING AT AUCTION YOU ARE LEGALLY BINDING A CONTRACT WITH THE AUCTION COMPANY.

ALL INVOICES MUST BE PAID WITHIN 24 HOURS FROM AUCTION DATE. IT IS PROHIBITED TO BID ON ANY ITEM THAT CANNOT BE PAID IN FULL WITHIN 24 HOURS FROM AUCTION DATE. PAYMENTS MUST BE CASHIERS CHECK, WIRE TRANSFER, OR LETTER OF GUARANTEE FROM BANK.

ALL ITEMS MUST BE REMOVED BY DECEMBER 21, 2021, 3:00 PM (PST)

NO LOADING OR PICK UP ON SATURDAY AND SUNDAY.

NO LOADING BY AUCTIONEER OR SELLER.

BUYERS PREMIUM 18% FOR ALL ONLINE BIDDING ON BIDSPOTTER.COM.

AUCTIONEER IS NOT RESPONSIBLE FOR MIS IDENTIFICATION OF ANY EQUIPMENT OR ASSETS BEING SOLD AT AUCTION EITHER BY VERBAL OR WRITTEN. IT IS THE BUYER'S RESPONSIBILITY TO INSPECT THE GOODS AND ASCERTAIN IF THE SPECIFICATIONS, DESCRIPTIONS AND CONDITION OF THE GOODS CONFORM TO THE BUYER'S REQUIREMENT INCLUDING SERIAL NUMBERS.

BUYER ACKNOWLEDGES THAT THE EQUIPMENT OR ITEMS PURCHASED ONCE MAY HAVE CONTAINED, EXPOSED TO, AND OR UTILIZED HAZARDOUS MATERIAL. THERE MAY BE SURFACES ON ITEMS WHERE DECONTAMINATION CANNOT BE VALIDATED: AS SUCH, THE BUYER OR BIDDER ACKNOWLEDGING THAT THEY ARE ACCEPTING THIS EQUIPMENT OR ITEMS IN AN "AS IS" CONDITION.

BUYER AND THEIR ASSOCIATES WILL HOLD AUCTIONEER AND "THE SELLER" HARMLESS AGAINST ANY AND ALL CLAIMS AND ACTIONS ARISING OUT OF THE PARTICIPATION OF THE INDEMNITEE IN THE ACTIVITY, INCLUDING, WITHOUT LIMITATION, EXPENSES, JUDGEMENTS, FINES, SETTLEMENTS AND OTHER AMOUNTS INCURRED IN CONNECTION WITH ANY LIABILITY, SUIT, ACTION, LOSS, OR DAMAGE ARISING OR RESULTING FROM THE INDEMNITEE'S PARTICIPATION IN THE AUCTION. ALL BIDDERS MUST ONLY USE APPROVED MACHINERY MOVERS BY SELLER WITH LIABILITY INSURANCE OF \$2,000,000 OR HIGHER. NO ITEMS SHALL BE REMOVED UNLESS PAID IN FULL AND ALL ITEMS SHALL BE REMOVED IN THE TIME ALLOCATED BY THE AUCTIONEER.

ALL SALES ARE FINAL, AND ALL ITEMS ARE SOLD AS IS WHERE IS, WITH ALL FAULTS AND DEFECTS.

THERE ARE NO GUARANTEE OR WARRANTY TO ANY ITEMS SOLD (RE: MAKE, MODEL, YEAR, HOURS, MILES, OR MERCHANTABILITY BY AUCTIONEER OR SELLER).

BUYERS RESPONSIBILITY TO INSURE PROPER USE FOR SAFETY.

ALL ITEMS ARE SOLD AS "PARTS ONLY"

BUYER ACKNOWLEDGES THAT THE GOODS ARE PRE-OWNED AND GOODS WERE NEITHER DESIGNED NOR MANUFACTURED BY SELLER. SELLER HAS NO KNOWLEDGE OF OR CONTROL OVER THE PRIOR USE OR MISUSE OF THE GOODS OR ANY MODIFICATIONS TO THE GOODS FOLLOWING ORIGINAL MANUFACTURE. NEITHER DOES SELLER HAVE KNOWLEDGE OR CONTROL OVER THE APPLICATION OF THE GOODS BY BUYER. IT IS THE BUYER'S SOLE RESPONSIBILITY TO PROVIDE PROPER SAFETY DEVICES, EQUIPMENT AND INSTRUCTIONS FOR ANY PARTICULAR USE OR TAKE NECESSARY STEPS TO CONFORM THE GOODS AND OPERATION THEREOF TO ALL FEDERAL, STATE OR LOCAL GOVERNMENT SAFETY STANDARDS AND LAWS INCLUDING WITHOUT LIMITATION THE OCCUPATIONAL SAFETY AND HEALTH ACT OF "OSHA". ANNOUNCEMENTS MADE BY THE AUCTIONEER ON THE DAY OF THE AUCTION TAKE PRECEDENCE OVER ANY PREVIOUS PRINTED MATERIAL PERTAINING TO THIS AUCTION. AUCTIONEER RESERVES THE RIGHT TO REMOVE OR ADD TO ANY AUCTION ITEMS ON THE LIST UNTIL AUCTION TIME.

LIVE WEBCAST ONLINE ONLY "NO ONSITE BIDDING"  
TUESDAY DECEMBER 7, 2021 @ 10:30 a.m.